

## ABERDEEN CITY COUNCIL

---

|                         |  |
|-------------------------|--|
| <b>COMMITTEE:</b>       | <b>Education, Culture and Sport</b>  |
| <b>DATE:</b>            | <b>27 May 2010</b>   |
| <b>DIRECTOR:</b>        | <b>Annette Bruton</b>  |
| <b>TITLE OF REPORT:</b> | <b>Community Learning Hubs and Review of Learning in the Wider Community</b> |
| <b>REPORT NUMBER:</b>   | <b>ECS/010/050</b>   |

---

### 1. PURPOSE OF REPORT

This report seeks approval for the recommended options for the development of Community Learning Hubs across the city. These options have been developed through further consultation, research and consideration of the best use of the Council estate, including opportunities for service co-location, partnership working and sharing resources.

The revised proposal is to consider eight learning community options which complement the proposals for city wide rezoning which is discussed earlier in this agenda. These are based on Associated School Groups or clusters:

1. Dyce / Bucksburn
2. Bridge of Don / Oldmachar
3. St Machar
4. Torry/Kincorth
5. Grammar
6. Harlaw & Hazlehead
7. Cults
8. Northfield

The subsequent recommendations are geographically presented with the underpinning rationale and research information detailed in the report. Consultation outcomes and supporting maps are included as appendices.

### 2. RECOMMENDATION(S)

1. To approve the preferred option for the Dyce / Bucksburn Associated School Groups community learning hub as Bucksburn 3Rs Campus, comprising Bucksburn Academy, The Beacon Centre and Bucksburn Community Library, as outlined in Section 6.1 of the report.
2. To instruct officers to undertake a capital business case in relation to the provision of a new community facility for the Bridge of Don / Oldmachar Associated School Groups to include a library and community learning hub in the light of new developments outlined in Section 6.2 of the report.

3. To approve the preferred short-term community learning hub option for the St Machar Associated School Group as Seaton 3Rs School and to approve the actions outlined in Section 6.3 of this report.
4. To approve Rosemount Community Learning and Development Centre as the community learning hub for the Grammar Associated School Group area in the short to medium term as outlined in Section 6.4 of the report, subject to the approval of a bid to the Non Housing Capital Programme 2011/12 to meet the costs of adapting the Centre as a community learning hub; and to instruct officers to prepare this bid and submit it to the Finance and Resources Committee.
5. To approve Torry Academy as the preferred option for the community learning hub for the Torry / Kincorth Associated School Groups in the short to medium term and to approve the actions outlined in Section 6.5 of this report, including the submission of a capital bid for the financial year 2011/12 to the Finance and Resources Committee for immediate remedial repair and maintenance costs for Kincorth Community Learning and Development Centre.
6. To approve the preferred option for the Harlaw and Hazlehead Associated School Groups community learning hub as Kaimhill 3Rs Primary School, co-locating the school, library and community learning and development centre and to approve the actions outlined in Section 6.6 of this report.
7. To approve Cults 3Rs Academy as the short-term community learning hub for the Cults Associated School Group allowing consideration of and consultation on other options as outlined in Section 6.7 of the report, remitting officers to provide a further report.
8. To approve the preferred short to medium term option for a community learning hub for the Northfield Associated School Group as Northfield Community Learning and Development Centre and Library as outlined in Section 6.7 of the report.
9. To note the budget savings identified in this report and to approve in principle that any savings over the £100,000 required for the 2010 - 2011 budget settlement are used to undertake necessary capital work and service redesign/improvement and to refer this for consideration to the Finance and Resources Committee.

### **3. FINANCIAL IMPLICATIONS**

The potential full year revenue savings detailed in the body of the report are summarised below. Projected spend to save items will be further developed on the basis of the options approved and will need to be considered in the context of affordability. Revenue savings over and above those required for the 2010 – 11 budget settlement will allow capital borrowing at the current forecast rate to offset building redesign and refurbishment costs.

| Item   | Revenue saving (£)                |
|--|-----------------------------------|
| Woodside Library staffing cost saving  | 8,000                             |
| Linksfild Library staffing and building costs  | 31,000                            |
| Hilton CLD Centre staff base closure   | 23,000                            |
| Staff savings identified in Grammar ASG  | 18,000                            |
| Torry Community Learning and Development Centre at Oscar Road Nursery building costs | 32,000                            |
| Relocation of Summerhill activity and Mastrick Youth Project                         | 5,889                             |
| Savings from Cummings Park flat  | 2,000                             |
| <b>TOTAL</b>   | <b>119,889</b>                    |
| Subject to decision on potential savings from:                                       |                                   |
| Building costs of Torry CLD Centre at Abbey Place                                    | 6,000                             |
| Building costs of Ruthrieston CLD Centre   | 17,000                            |
| Estimated capital receipts from building sales:                                      | <b>Estimated Capital Receipts</b> |
| Cairnfield Leased Community Centre   | 125,000 – 200,000                 |
| Hilton CLD Centre and Nursery  | 800,000                           |
| Torry CLD Centre at Abbey Place  | 40,000                            |
| Ruthrieston CLD Centre   | 250,000                           |
| <b>TOTAL</b>   | <b>1.215M - 1,290M</b>            |

If the Council declares identified property surplus to its requirements at some future date, then around that time officers would instruct determination of its market value for the purposes of assessing capital receipts. It is not practice to instruct that exercise at this stage for reasons of fluctuation in market value and because judgement would need to be made about when best to release properties for sale onto the market.

Savings on Community Learning and Development support costs will be contingent upon restructure which will be the subject of a further report. Staffing savings do not take account of any exit costs associated with rationalisation.

Any revenue and capital requirements for service and building redesign will be subject to committee decision and a further report on costs.

#### 4. SERVICE & COMMUNITY IMPACT

The links to the Community Plan, the Single Outcome Agreement and Vibrant, Dynamic & Forward Looking are as follows:

- **Vibrant, Dynamic and Forward Looking – The Liberal Democrat and SNP Programme for Aberdeen City Council:** This contains a commitment to establish a network of Community Learning Hubs across the city.
- **Combined Community Plan and Single Outcome Agreement –** The development of Community Learning Hubs and review of community centres and community learning and development activity contribute to SOA Outcomes as follows:
  - People of all ages take an active part in their own learning to achieve their full potential.
  - Learning and training is appropriate and accessible to learner's needs

- Children and young people access positive learning environments and develop their skills, confidence and self esteem to the fullest potential
- Children, young people and their families/carers are involved in decisions that affect them. Their voices heard and they play an active and responsible role in their communities
- Educational attainment in Aberdeen is continuously sustained and improved
- School leavers enter positive destination of employment, training or further and higher education with a focus on and support for young people who require More Choices and More Chances
- Children and young people actively participate in their communities and have optimum involvement in decision making
- All children, young people and their families have access to high quality services when required and services provide timely, proportionate and appropriate response that meeting the needs of children and young people within Getting it Right for Every Child, (GIRFEC) requirements
- Improve the quality of life in our most deprived areas
- Citizens are increasingly more active in their communities regardless of age, gender, sexual orientation, ethnic origin, where they live, disability or faith/religion/belief and contribute to 'active citizenship'
- Develop pathways to participation which enhance the diversity of local representation at and engagement with regional, national and international arts, heritage and sporting events
- Our public services are consistently high quality, continually improving, efficient and responsive to local people's needs

An Equalities & Human Rights Impact Assessment has been undertaken and submitted.

## **5. OTHER IMPLICATIONS**

This report has other implications as follows:

- Legal – in relation to employment legislation where posts may be at risk as a result of certain options being exercised.
- Property and personnel – options for co-location of services, partner agencies and staff and changes to the Council estate.
- Sustainability - options for consideration are intended to provide more sustainable services that are fit for the future.
- Health and safety – co-location of services will reduce lone working.

## **6. REPORT**

The background information and detail on previously tabled options for seven community learning hubs and supporting learning satellites across the city was contained in report ECS/09/032 to 8 October 2009 meeting of the Education Culture and Sport Committee. The options contained in that report are now under consideration following consultation undertaken with stakeholders from October through to 3 December 2009.

**Consultation Outcomes on Local Options for Hubs and Satellites with Identified Savings for each ASG or ASG Grouping**

On the basis of research presented in the last report to Committee, officers consulted on the identified options for seven Community Learning Hubs and the Learning Satellites that could support them.

Consultations and briefings were held as follows:

| <b>Date</b>         | <b>Type of Consultation / Briefing</b>   | <b>Attendance</b>           |
|---------------------|--|-----------------------------|
| 25. September 09    | Union Briefing   | 3 + officers                |
| 28 September 09     | Staff Briefing   | 41                          |
| 28 September 09     | Report sent out to Community Councils, Community Groups and Community Centre Management Committees |                             |
| <b>8 October 09</b> | <b>Report ECS/09/044 to Education, Culture &amp; Sport Committee</b>                               |                             |
| 14 October 09       | Leased Community Centre Consultation   | 32 + 4 Members              |
| 26 October 09       | Staff Consultation   | 34 staff                    |
| 27 October 09       | Leased Centre Consultation   | 7 + officers                |
| 28 October 09       | Staff consultation   | 30 staff                    |
| 28 October 09       | Public citywide consultation   | 21 + officers               |
| 29 October 09       | Lifelong Learning Forum  | 12                          |
| 29 October 09       | Public citywide consultation   | 18 + officers               |
| 2 November 09       | St Machar ASG consultation   | 23 + 1 Member               |
| 4 November 09       | Torry/Kincorth ASG consultation  | 103 + 3 Members             |
| 5 November 09       | Early Years and Childcare Partnership  | 13                          |
| 5 November 09       | Cults, Harlaw, Hazlehead consultation  | 9 + officers                |
| 10 November 09      | Bucksburn/Dyce ASG consultation  | 9 + 2 Members               |
| 11 November 09      | Northfield ASG consultation  | 4 + officers                |
| 18 November 09      | Bridge of Don / Oldmachar ASG consultation   | 24 + 1 Member               |
| 19 November 09      | Grammar ASG consultation   | 6 + 1 Member                |
| 23 November 09      | Member Briefing – Question and answer session  | 19                          |
| 24 November 09      | Verbal update to Education, Culture & Sport Committee  |                             |
| 1 December 09       | Leased Centre Document Meeting   | 23                          |
| 3 December 09       | Aberdeen Civic Forum Briefing  | 6                           |
| 20 April 2010       | Torry Abbey Place  | 5                           |
| 26 April 10         | Portal CLD Centre & Tilly Youth Project  | 27 + officers               |
| 27 April 10         | Seaton CLD Centre, School Road   | 29, 2 members & officers    |
| 27 April 10         | Ruthrieston CLD Centre   | 30 + 1 Member plus officers |

During the course of these consultations, participants were asked to express their views and offer any alternatives for further consideration. The hubs are based on Associated School Groups (ASGs) or ASG clusters. Delivery would need to be phased and synchronised with other development plans and timelines for implementation will be presented once decisions have been made on the way forward. Consultation outcomes were as follows.

## **6.1 Dyce / Bucksburn Associated School Groups**

### **6.1.1 Option for a Community Learning Hub and Learning Satellites.**

Bucksburn 3Rs Campus was suggested as a community learning hub with learning satellites at Dyce Academy, Dyce Primary School & Community Learning and Development Centre, Bucksburn, Kingswells, Stoneywood and Newhills Primary Schools, Dyce Library, Carnegie Hall Community Centre, Kingswells Leased Community Centre/s. Map 1 shows the locations of these sites.

#### **Rationale**

This campus of facilities provides modern, purpose built facilities with co-location of a range of learning services in close proximity and provides a best fit with Learning Estate proposals.

**6.1.2** The following paragraph summarises the comments received from the consultation in relation to the options for these Associated School Groups:

- Concern that staff will be moved around and local contact lost.
- Supporting expanded Youth & Adult Learning programmes
- Want and welcome accessible learning satellite & hub options more fully worked up
- Want more joined up working across the Council
- Concern about the community learning and development programme within the Beacon Community / Sports Centre and the role of the management committee

A more detailed breakdown of key points from this local consultation exercise is at Appendix 1.

### **6.1.3 Alternative options**

Officers were asked to explore the feasibility of re-siting Dyce Library to the Carden School Garden site adjacent to Dyce Primary School. It was felt that this would make the library more accessible to the wider community providing a campus of facilities including the primary school with Dyce Community Learning & Development Centre, police station and library.

A site visit was made and a summary of findings was that the site was not suitable for two reasons:

1. The condition of building which has been vacant for some time, has a flat, leaking roof and would require reconfiguration of the internal layout, repair to fabric and refurbishment and redecoration together with improved disabled access.
2. The location of the building for reasons of its distance away from other community facilities and inaccessibility by public transport, (as assessed as a potential customer access point in August 2008 )

The current Dyce Library was assessed in the same aforementioned report as being in an ideal location, "in terms of location, accessibility and having an existing face to face service." For these reasons, and in the

light of objective assessment officers do not recommend a relocation of Dyce Library.

#### **6.1.4 Further research information**

**Beacon Community / Sports Centre** - A Service Level Agreement is being developed in relation to the delivery of a community learning and development programme at the Beacon Community / Sports Centre. This will detail the programming at specified times within the designated parts of the building.

#### **6.1.5 Revenue Savings**

- Proportion of revenue costs of Bucksburn Library to be quantified although it is likely savings are likely to be required to offset the unitary charge.
- Savings on Community Learning and Development support costs contingent upon restructure.

### **6.2 Bridge of Don / Oldmachar Associated School Groups**

#### **6.2.1 Option for a Community Learning Hub and Learning Satellites**

The suggestion of Scotstown Primary School as a community learning hub with a co-located library service is no longer viable due to an increase in primary school pupils and the consequent lack of space. An alternative option in the short term is the development of a community learning hub based around the Bridge of Don Academy and comprising facilities at primary schools, St Columba's Church of Scotland and Roman Catholic Church, Alex Collie Sports and Community Centre, Bridge of Don Library, Health Centre and St Nicholas Pupil Support Centre. Learning satellite options listed are at Bridge of Don Library, Oldmachar Academy, Braehead, Danestone, Forehill and Middleton Park Primary Schools. Also locations at Middleton Park Community Centre with a possible option to work with Sport Aberdeen to use the LP Alex Collie Centre and Jesmond Centres and have limited use of learning points at Balgownie and Danestone Leased Community Centres. Map 2 shows the locations of these sites.

#### **Rationale**

The Academy provides a focal point for supporting learning in the wider community. Options for the future will require consideration through the development of a capital business case that takes account of any changes to school zoning and new housing developments. The age and condition of the current Bridge of Don library means that the building has a limited lifespan and the footprint is too small for the needs of the local community. The move towards integration and co-location of local facilities will achieve economies of scale, reduced revenue costs and capital receipts. This also takes account of current Learning Estate Proposals.

**6.2.2** The consultation for the Bridge of Don and Oldmachar ASGs took place when the proposal for the co-location of a community learning hub and library within Scotstown Primary School was still current. The following paragraph summarises the comments received:

- Concern about option for co-location of library with Scotstown Primary School due to security and accessibility for less ambulant users
- Desire for library to remain in or close to its current location because of ease of access
- Desire for a revamped and upgraded library possibly funded through further local housing development
- Bridge of Don community deserves better integrated range of community facilities
- Concern about nature of lease arrangements for leased community centres

A more detailed breakdown of key points from this local consultation exercise is at Appendix 2.

### **6.2.3 Alternative options**

#### **Glashieburn School**

Glashieburn School has been suggested as an alternative location for the library. This option has been examined but is not considered viable because the accommodation within the school is not considered large enough for library use and is not readily accessible by the public. It is also not in an optimum location and public parking is not available close by.

### **6.2.4 Further research information**

#### **LP Alex Collie Community Centre**

A Service Level Agreement is being developed in relation to the community centre and any future options for community learning and development programming at the Alex Collie Community / Sports Centre. This will detail the programming at specified times within the designated parts of the building.

**Bridge of Don Library** – The library is already the second busiest community library in the city and is well over its capacity and severely space constrained. The current building does not allow for any service development and this is a particular concern given the potential increase to the local population as a result of Local Development Plan proposals. The current building size would not accommodate the projected increase in the older population for the Bridge of Don and the need for dedicated provision for this section of the community. There is also no room for expansion of the children's service, provision of employability services in relation to the 0.9% 2008 unemployment rate and there is limited space for public access PCs.

The library is a flat roofed building, beyond its intended 30 year lifespan and has been earmarked for replacement for the past 10-15 years. Alternative accommodation is required and the proposed co-location of the library within Scotstown Primary School would have provided a suitable solution. The inability to progress this because of changes identified to the primary school roll in April 2010, will require further research into possible options for future integrated service provision.



### **6.2.5 Capital & Revenue Savings**

- Capital receipts from Cairnfield CC –are calculated by Asset Policy to be within £125,000 and £200,000.
- Savings on Community Learning and Development support costs contingent upon restructure

## **6.3 St Machar**

### **6.3.1 Option for a Community Learning Hub and Learning Satellites**

In the short term, Seaton 3Rs Primary School was suggested as a community learning hub with an option to consider a medium to long term hub at Riverbank Primary School or a new build in Tillydrone Regeneration area as part of the housing regeneration. Learning satellite options listed were at Cornhill Community Learning and Development Centre in Cornhill Primary School and Sunnybank Community Learning and Development Centre in Sunnybank Primary School, Kittybrewster and Hanover Street Primary Schools, Tilly Community Flat, Fersands, and Printfield Community Projects, St Machar Parent Support Project and Aberdeen Lad's Club. Additional learning satellites also at Woodside and Fountain Customer Access Point, Cornhill and Tillydrone Libraries and, where space is available at Cairncry, Hanover, Hilton, Pittodrie, Tillydrone and Powis Gateway Community Centres. Map 3 shows the locations of these sites.

#### **Rationale**

It is considered that this is best use of an existing 3Rs facility. The option also recognises that a medium term school roll increase at Seaton Primary School and potential squeeze on other services may mean that opportunities for utilising space within an extended Riverbank Primary School or a new-build community facility in the medium term as part of housing regeneration would be a sensible route to follow.

**6.3.2** The following paragraph summarises the comments received from a consultation held on 2 November 2009 in relation to the options for these Associated School Groups.

- More details required on future nature & location of services provided in the Portal Community Centre, Tilly Youth Project, Linksfield and Woodside Libraries
- Concern about retention of local services
- Support for Woodside Library service and as a building of historic value
- Desire for academies to be open for wider community use
- Want modern investment in Tillydrone
- Concern over future and capacity of Riverbank School for growing pupil numbers
- Consideration of continued use of School Road Community Learning and Development Centre for health outreach work unsuitable to be located within a primary school.

A more detailed breakdown of key points from local consultation exercises is at Appendix 3 and 3A.

### 6.3.3 Alternative options

It was suggested that officers consider the use of Tillydrone Leased Community Centre for Tilly Youth Project. This does not provide suitable accommodation for the needs of Tilly Youth Project and is not in an accessible location.

### 6.3.4 Further research information

#### Medium to Long-term Hub Options

It is recommended that, in liaison with other Directorates and partner agencies, officers undertake further work and report back on medium to long term community learning hub options.

**Portal Community Learning and Development Centre and Tilly Youth Project-** Detailed discussions have taken place with housing over the planned housing regeneration programme for the Tillydrone area as this will impact upon both sites. The regeneration plans are still under development but the use of the land on which Tilly Youth Project is located is likely to be in the first phase requiring a more imminent need to relocate this service. The youth project is the main focus for youth work in Tillydrone providing support for young people, alternative education for young people at risk of exclusion and will include the 16 + Learning Choices programme as it develops.

It is anticipated that the St Machar Primary School site will transfer, as previously approved at Full Council in November 2008, to the Housing Revenue Account in this financial year and that it will be possible to continue community learning and development service provision at the Portal Community Learning & Development Centre for approximately 2-3 years. The Portal centre could house Tilly Youth Project with some internal building adaptation however, officers are still exploring alternative venues for TYP activity to minimise the need for reallocation of Portal services to other local venues. The outcome of this research will be reported to the next committee cycle.

If the Portal was to house TYP, it is known that some crèche places could be provided elsewhere in the community and that Adult Learning needs could be accommodated within the Portal CLD centre, Tillydrone Library and Tilly flat. There will be a requirement to isolate the utility supplies to the Portal site as they are currently supplied through the school. The site will also need to be fenced off from the school site allowing the building to operate independently and for the remaining school site to be cleared.

A further consultation was undertaken on 26 April 2010 with stakeholders of the Tillydrone Youth Project and The Portal CLD Centre over options identified for continued delivery of community learning & development services in Tillydrone. The options identified were:

|          |  |
|----------|--|
| Option A | Close Portal Community Centre and relocate services to other local sites                         |
| Option B | Close Portal Community Centre and Tilly Youth Project and relocate services to other local sites |
| Option C | Retain Portal Community Centre in short term, relocating   |

|          |   |
|----------|---|
|          | Tilly Youth Project to the site   |
| Option D | Close Portal and Tilly Youth Project and relocate to Aberdon House co-locating with Housing use |

Comments received at and following the meeting were as follows:

- Community support for services at Tilly Youth Project (TYP) and the Portal to go into Aberdon House but only if not used as a homeless hostel. Dual use considered inappropriate and unsafe to CLD service users.
- Options A & B broadly unsupported
- Option C is a possibility with some concern expressed at amount of space for TYP and possible loss of services

### **Tillydrone Library**

The library can provide space and facilities for adult learning classes. Aberdeen College are due to upgrade their computers at Tillydrone Library and are keen to provide learning opportunities locally.

### **Hilton Community Learning and Development Centre officer base**

The previous report suggested vacation and closure of this base which also provides a location for the community dentist. Officers investigated the site as a potential location for a family contact centre but this is now no longer considered viable. Staff accommodation is available at Rosemount Community Learning and Development Centre. An alternative location is required for the community dentist and discussions are ongoing with NHS Grampian to achieve a replacement venue for this site and the facilities at Linkfield. Officers recommend that this building is declared surplus to the requirements of the Education, Culture and Sport Directorate once the building is vacated.

**Linkfield Library** – This is currently located within Linkfield Academy which will be demolished for 50m pool and is likely to be closed by the end of 2010. A review of Linkfield use is currently underway to determine where users reside and what services in particular they use and when. Alternative service delivery options are to provide a redesigned service within Seaton 3Rs Primary School or to promote community use of Tillydrone Library or the Central Library.

**Woodside Library** - The level of investment required to ensure the building is fit for purpose is estimated at £250,500 over 4 – 6 years. This is because the windows and heating system need replacing, extensive fire safety work needs to be carried out inside the building if it is to remain open to the public and repairs are required to the exterior walls and roof. Officers recommend retention of the building as an archive / store in the short-term with medium term option of building being taken over and run for alternative community use.

Given comments received from members of the community it is clear that there is a wish to retain a library service within Woodside. A review of Woodside use is currently underway to determine where users reside and what services in particular they use. Alternative service delivery options are to consider relocation within other Council buildings and a further report will be prepared on these options.

**Woodside and Fountain Centre**– A range of organisations and services including the Woodside Leased Community Centre are co-located within this new development.

**Seaton Community Learning & Development Centre on School Road** - This centre currently houses a range of services which were displaced during the decant from Seaton Primary School during 3Rs refurbishment. These include a variety of services to people in drug rehabilitation, adult learning and youth work services and a pensioner's group.

The one to one drugs counselling and rehabilitation service would not be compatible within the proposed hub at Seaton 3Rs School. Alternative locations have been looked at by an inter-agency group but, to date, no suitable alternative venue has been identified. It was on the basis of an ability to rehouse this important local service that officers previously recommended that the building could be declared surplus to the requirements of Education, Culture and Sport.

A local consultation was held with service users, partners and stakeholders of the services at School Road CLD Centre on 27 April 2010. The key messages from this were:

- The centre provides as an informal core 'hub' in the local community with all service users integrating well
- The location of the site on the main road lends itself to a discreet drop-in drugs rehabilitation and support service that is well-liked and well-used
- The drugs rehabilitation project outcomes had improved markedly since it had moved to the premises
- There was general support for the view that the school would not be suitable for any drugs related work and that less local people with rehab needs would access a less central location and shared site with CL&D, School and Police in same building with resulting negative consequences for the whole community.
- Stakeholders wish time to consider options for retaining the building and seeking funding sources to enable this.

Officers are therefore recommending that any decision on the future of this centre is deferred pending further investigation on funding options which will be included in a report for the next committee cycle.

#### **6.3.5 Revenue Savings**

- Woodside Library staffing cost saving - £8,000
- Linkfield Library - £31,000
- Building revenue savings from closure of Hilton Community Learning and Development Centre, (£23,000),
- Savings on Community Learning and Development support costs contingent upon restructure

### **6.4 Grammar Associated School Group**

#### **6.4.1 Option for a Community Learning Hub and Learning Satellites**

Rosemount Community Learning and Development Centre has been identified as the community learning hub being the only building currently available. The Education, Culture & Sport Directorate would want to use the available accommodation efficiently and flexibly, providing accommodation for other services and certain refurbishment works will be required. Refurbishment costs are currently being assessed at current market rates with a view to being resubmitted to the 2011 -12 Non Housing Capital Programme for consideration.

Learning satellite options listed are at Mile End 3Rs Primary School, Skene Square and Gilcomstoun Primary Schools, Catherine Street and / or Froghall leased community centres, Aberdeen Grammar School. Map 4 shows the locations of these sites.

### **Rationale**

Few options due to lack of buildings in this ASG. Best fit with current Schools Estate proposals and insufficient space within Mile End 3Rs Primary School.

**6.4.2** The following paragraph summarises the comments received from the consultation in relation to the options for this Associated School Group:

- Query re role of community centre management committees in relation o community learning hubs in the future
- Will capital receipts be available to support new facilities or go into city funds generally
- How long will Rosemount Community Centre exist and what level of refurbishment will there be to support the hub?
- Where would a new school/hub be located?
- Where would the Rosemount staff and programme go during refurbishment

A more detailed breakdown of key points from this local consultation exercise is at Appendix 4.

### **6.4.3 Alternative options**

None suggested.

### **6.4.4 Further research information**

**Rosemount Community Learning & Development Centre** –If the centre becomes a community learning hub, staff operating community learning and development services for City Centre/George St/Ashgrove/Rosemount would be based on 1<sup>st</sup> floor office with additional accommodation required on 2<sup>nd</sup> floor for the Healthy Minds Team, (relocated from Hilton CLD staff base) & Adult Literacies staff (relocated from Linkfield CLD centre which is closing for the 50m pool development).

### **6.4.5 Revenue Savings**

- Savings on Community Learning and Development support costs of £18,000

- Revenue savings identified for St Machar Academy ASG through co-location of workers previously located at Linksfield CLD Centre and Hilton CLD staff base.

## **6.5 Torry / Kincorth Associated School Group**

### **6.5.1 Option for a Community Learning Hub and Learning Satellites**

Torry Academy was suggested as a community learning hub with the option to co-locate Whitespace ceramic and glass activity. Learning satellite options listed were at Tullos Community Learning and Development Centre in Tullos School, Walker Road Primary, Torry Youth Project, Kincorth Academy, Kirkhill, Abbotswell and Charleston Primary Schools, Kincorth Customer Access Point, CLD Centre and Library, Loirston Community Centre in Loirston Primary School. Also included as potential learning satellites were Altens and Balnagask Leased Community Centres, (subject to capacity and willingness of their respective management committees) and Torry and Cove Libraries. Map 5 shows the locations of these sites.

#### **Rationale**

This is considered best use and fit with current Schools Estate thinking of an under occupied Academy and could provide a basis for a South of city vocational based learning centre in line with regeneration needs of the area.

### **6.5.2** The following paragraph summarises the comments received from the consultation in relation to the options for these Associated School Groups:

- Want more community facilities in Cove not less for a growing community
- Unhappy about consultation process and lack of informed research
- Wish to ensure that the benefits to the community through building developments should be maximised
- Concern about future of community centre at Abbey Place
- Support for location of the hub option at Torry Academy from Torry Community Council
- Representations received from Torry Community Council, Lead Scotland and staff arguing that the Torry Learning House should be retained because it provides for sections of the community that could not access learning at a school
- Balnagask Leased Community Centre does not want to be a learning satellite

A more detailed breakdown of key points from this local consultation exercise is at Appendix 5.

### **6.5.3 Alternative options**

#### **Torry Community Centre at Abbey Place**

Officers are pursuing research and the necessary support for Abbey Place Community Centre to be considered for a community ownership pilot. Details are being worked up with help from the Scottish

Government and DETAS (Development Trust Association Scotland).  
The centre programme is currently:

| <b>Day</b> | <b>Time</b> | <b>Activity</b>            |
|------------|-------------|----------------------------|
| Monday     | Morning     | Torry Health Action        |
|            | Afternoon   | Torry CC Bowling Group     |
|            | Evening     | Torry Bingo                |
| Tuesday    |             | Not used                   |
| Wednesday  | Morning     | Torry Health Action        |
| <b>Day</b> | <b>Time</b> | <b>Activity</b>            |
| Wednesday  | Evening     | Advanced Social Dancing    |
| Thursday   | Evening     | Beginners Ballroom Dancing |
| Friday     | Afternoon   | Torry Health Action        |

If the building were to close, an appropriate, alternative site would need to be considered for the valuable work of Torry Health Action. It is the view of officers that the centre programme is not sufficiently active and would need to be developed if the building were to be viable in community ownership. There is no revenue budget for this site so urgent decisions on future self-financing need to be made.

A consultation meeting took place on 20 April 2010. This was attended by 1 member and 5 people from Torry Health Action and the Association for Promoting a Community Trust in Torry and officers undertook to make the committee aware of the following views:

- A wish to retain the building for community use of this area of Torry given the loss of other community facilities;
- Recognition of the specific regeneration needs of the Torry community;
- The need for a building condition survey to inform possible consideration of community ownership;
- A willingness to consider community ownership subject to knowledge of the building condition and repair liabilities; and,
- Recognition of the need to be self-financing and to seek improved use of the building and work on marketing, external funding and sponsorship possibilities.

The meeting also nominated two people to attend the DTAS seminar on Community Ownership of Assets in Edinburgh on 26 May on which officers can provide a verbal update.

Officers recommend that a decision on the future of this building is deferred until the next committee cycle to allow an informed decision on the viability of the centre in community ownership.

#### **6.5.4 Further research information**

##### **Torry Academy**

Officers have visited the school to assess the viability of the community learning hub at this location. The school is keen to be involved in wider learning and in the community accessing the school dependant upon appropriate safeguards in relation to child protection. A potential area has been identified and technical drawings commissioned identifying potential costs of circa £595,000. The school also aims to be a

vocational centre for the South of the city and this could sit quite comfortably with the community learning hub proposal. The Arts Development team are currently assessing their requirements for Whitespace ceramics and glass activity and are still interested in being part of the hub.

### **Torry Youth Project**

A Service Level Agreement is being developed in relation to the shared use of the Torry Youth and Leisure Centre. This will detail the programming at specified times within the designated parts of the building.

### **Torry Learning House**

Representations have been made during consultation that due to the client base (which includes adult learners within the criminal justice system and with bad school experiences), co-location within a school would be inappropriate. The learning house is currently self-financing and officers recommend that the learning house should remain as long as accommodation costs can be covered in this way.

### **Kincorth Community Learning and Development Centre**

The centre is one wing of a building providing a community hub in Kincorth comprising the library, customer access point and a GP surgery. The centre is joined to the rest of the complex but is in a poor state of general repair. An initial Council building condition survey assessed the property at an overall condition Grade C and officers issued an instruction for a more detailed survey by Rydens which concluded that £37,740 requires to be spent in the next 6 months to bring the property into a Grade B condition. In addition, the surveyors recommended that the property requires a further £74,122 spent to maintain the property at this grade over the next 10 years inclusive of £33,500 on kitchen and toilet facilities due to their age.

Kincorth CLD Centre is on the reserve list for window and roof replacement under the Council's Replacement and Renewal Budget Programme and officers recommend that account is taken of this prior to preparing any potential bid to the 2011 -12 Non-Housing Capital Programme.

### **Altens Leased Community Centre**

An initial Council building condition survey also assessed this building at a Grade C and officers issued an instruction for a more detailed survey by Rydens which concluded that £9,750 required to be spent to bring the building up to a Grade B in the next 6 months with £44,265 requiring to be spent to maintain the building at Grade B over 10 years.

### **Loirston Annexe**

Further research was undertaken as to whether or not early years and childcare activity undertaken at Loirston Annexe could be accommodated elsewhere in the immediate area. The report on this was provided on 18 November 2009 concluding that alternative accommodation for the 48 children using these services was not available. On the basis of this information, officers recommend removing the option for closure of Loirston Annexe.



### **Balnagask Leased Community Centre**

During the consultation exercise, representations were made to the Council that it was inappropriate for this centre to be considered as a learning satellite. Officers have already indicated that use of leased community centres as learning satellites is subject to capacity and the agreement of management committees. It would, however, be unwise to preclude such centres from the opportunity to income generate and it is suggested the option for learning use remains.

#### **6.5.5 Revenue Savings**

- Revenue savings from Torry Community Learning and Development at Oscar Road Nursery (£32,000),
- Savings on Community Learning and Development support costs contingent upon restructure

### **6.6 Harlaw & Hazlehead Associated School Groups**

#### **6.6.1 Option for a Community Learning Hub and Learning Satellites**

Kaimhill 3Rs Primary School was suggested as a community learning hub providing co-location for the school, library and community learning and development centre staff and activities. Learning Satellites are suggested at Cults 3Rs Academy, Hazlehead and Harlaw Academies, Airyhall and Hazlehead 3Rs Primary Schools all with community facilities and at Culter, Milltimber, Cults, Broomhill, Ashley Road and Ferryhill Primary Schools. In addition, Airyhall & Culter Libraries, Cults Library and LearnDirect centre and Airyhall, Inchgarth, Ferryhill and Sheddocksley Leased Community Centres, the latter subject to capacity and willingness of their respective management committees. Map 6 shows the locations of these sites.

#### **Rationale**

This is considered best use of a new purpose-built 3Rs facility which is the only building with sufficient space for the community learning hub and learning partnership staff base. It also provides co-location of services providing a central location for staff access to the wider Harlaw and Hazlehead catchment area.

#### **6.6.2** The following paragraph summarises the comments received from the consultation in relation to the options for these Associated School Groups:

Concern over:

- impact of option to close 2 community facilities in Ferryhill
- Distance required to be traveled to access other library facilities at either the Central Library or Kaimhill Library
- Ferryhill Library being lost because it is the only community facility and it is actively used by people of all ages in the community and local workers
- Potential pressure on computer use at the Central Library if Ferryhill Library closes

- Lack of short term community learning hub option as Kaimhill 3Rs Primary School is not yet built
- See Section 6.6.3 for comments on Ruthrieston CLD Centre

A more detailed breakdown of key points from the local consultation exercises held in November 2009 and April 2010 are at Appendix 6 & 6A.

### **6.6.3 Alternative options**

**(1) Inchgarth Community Centre Proposal to Manage Kaimhill Community Learning and Development Centre** - Prior to and not part of this consultation, officers received a request from Inchgarth Leased Community Centre for consideration of an alternative community activity programme management option for Kaimhill Community Learning and Development Centre within the new Kaimhill 3Rs Primary School.

There are financial implications to be considered in relation to this proposal:

- Space needs to be provided for community learning and development activity to take place in the Garthdee area.
- Council service utilisation of 3Rs facilities allows the Council to maximise income streams through lets.
- There is no provision in mainstream budgets for the salaries of class tutors or sessional staff in relation to learning in the wider community. It is practice across the city for the income stream from lets to cover these revenue costs and the delivery of learning programmes is therefore dependant upon this income.
- The unitary charge for 3Rs premises would still be payable by the Council if activities were managed under a leased arrangement and the income stream was not available to off-set this.
- A further revenue cost would be incurred if a development grant was required for management of community activities at Kaimhill under a leased centre arrangement.

For the above financial reasons, officers do not recommend further consideration of this request.

### **(2) Kaimhill Community Learning & Development Centre Management Committee Proposals**

The Council received an options paper from Kaimhill Community Learning and Development Centre Management Committee in relation to the development of a new programme of community activity within the new Kaimhill 3Rs Primary School when it opens.

Of 5 identified options, the Management Committee supported the location of a community learning hub at Kaimhill Primary School. It was further proposed that Kaimhill and Inchgarth Community Centres could be “combined” to become a joint management committee known as “Garthdee Community Centre”. The identified benefits of this approach were stated as:

- Provision of a range of lifelong learning services meeting the identified needs of Garthdee residents through the learning partnership approach

- Revitalisation of Garthdee
- Improved co-operation between the centres, maximising their collective potential through joint working and better use of resources.

Officers recommend that this approach should be further explored and officers remitted to report to the next committee cycle on the possibilities.

**(3) Proposal for Ferryhill Library** - Officers recommend the removal of the option to close Ferryhill Library following further detailed consultation with service users.

**(4) Ruthrieston Community Learning & Development Centre** - The activity data provided to officers was questioned during the consultation and, it would appear that activity was inaccurately represented in the returns provided. The returns have now been corrected to provide weekly activity data as follows:

| <b>Activity</b>             | <b>Weekly footfall</b> |
|-----------------------------|------------------------|
| Under 5's                   | 67                     |
| Youth work                  | 32                     |
| Adult Learning              | 123                    |
| Community Capacity Building | 158                    |
| <b>TOTAL</b>                | <b>380</b>             |

The centre management committee has requested consideration for the building to remain open operating as a leased community centre. This, together with the option for community ownership is being researched. Details are being worked up with help from the Scottish Government and DTAS (Development Trust Association Scotland).

Officers met with the Management Committee of the Centre on 15 April when an interest in community ownership was tentatively made. The centre Management Committee also nominated two people to attend the DETAS seminar on Community Ownership of Assets in Edinburgh on 26 May on which officers can provide a verbal update. At a public meeting on 27<sup>th</sup> April, options for the centre were presented and the following views were expressed:

- Unanimous view that centre should remain open as a community facility
- Inflexible bookings system deters potential users
- Centre needs to increase level of activity
- Leased centre option or community ownership require further consideration

#### **6.6.4 Further research information**

##### **Provision of Alternative Library Services in the Ferryhill Area**

Consideration had been given to the possibility of providing alternative library services, particularly lending services, within other community facilities. Officers are recommending removal of this option following

representations from the public, service users and Ashley and Broomhill Community Council

**Ruthrieston Community Learning and Development Centre** – This centre is one of two used by the Ferryhill community but serving differing parts of the community each side of Holburn Street. The Ferryhill Leased Community Centre serves the area of Ferryhill adjacent to the city centre and the River Dee and Ruthrieston serves the upper part of the neighbourhood and the communities of Ruthrieston, Ashley and Broomhill. Ruthrieston CLD Centre has an active management committee who wish to take over the running of the building and management of the activities therein. Officers recommend further work on the viability of either a leased or community ownership model of management pointing out the financial implications for professional staffing as highlighted in 6.6.3 (1) above.

#### **6.6.5 Revenue Savings**

- Savings on Community Learning and Development support costs contingent upon restructure
- Potential social work team revenue savings if located within Cults primary school once CLD team vacate these premises.

### **6.7 Cults Associated School Group**

#### **6.7.1 Option for a Community Learning Hub and Learning Satellites**

Cults Associated School Group was previously in a cluster group with Harlaw and Hazlehead with a community learning hub option identified at Kaimhill 3Rs Primary School. Further work is now required to identify options for a community learning hub for the Cults ASG taking into account any options for service co-location, integrated service delivery and opportunities presented as a result of planning developments. In the short-term, Cults 3Rs Academy could serve as the community Learning Hub allowing time for community consultation and consideration of other options. Learning Satellites are suggested at Culter, Milltimber and Cults Primary Schools plus Culter Library and Cults Library and LearnDirect centre. Map 7 shows the locations of these sites.

#### **6.7.2 Consultation**

Officers recommend that consultation is undertaken with local communities, partners and learning stakeholders to identify viable medium to long-term options for a community learning hub for a future committee decision.

#### **6.7.3 Further Research Information**

##### **Culter Police Station**

During the previous consultation, representations were made that the Director of Enterprise, Planning and Infrastructure was leading investigations into the option for the Council to purchase Culter Police Station and co-locate a range of Council services in this building freeing up 2 other Council owned buildings in the village as a result. The Police Station is now for sale and this is no longer an option.

## **6.8 Northfield Associated School Group**

### **6.8.1 Option for a Community Learning Hub and Learning Satellites**

The community learning hub option identified in the short to medium term is Northfield Community Learning and Development Centre and Library subject to building redesign. In the medium to long term, a potential should be considered for co-location within a range of new community facilities which will form a Community Hub. Account will also need to be taken of any impact on service delivery requirements arising out of the Greenferns Master Plan.

Learning Satellites have been identified at Northfield Academy, Bramble Brae, Fernielea, Heathryburn, Kingsford, Muirfield, Smithfield, Quarryhill and West Park Primary Schools, Mastrick Community Learning and Development Centre, Cummings Park, Middlefield Community Project, Youth Flat, Pathways and Healthy Hoose and Mastrick Library. In addition, Cummings Park and L.P. Henry Rae and leased community centres subject to capacity and agreement of the respective management committees. Map 8 shows the locations of these sites.

#### **Rationale**

This is considered the best fit in light of the impending closure of Summerhill, unknown timescale of Middlefield regeneration implementation and current schools estate thinking.

### **6.8.2** The following paragraph summarises the comments received from the consultation in relation to the options for these Associated School Groups:

- Concern over continued uncertainty on the future of Summerhill Community Centre and the impact on the Confidence to Cook initiative which is a training kitchen mainly working with disadvantaged and vulnerable adults.
- Concern about potential duplication of services and lack of direct transport routes between communities that might cause inaccessibility problems
- Willingness to be involved in redesign of service at Northfield.
- Learning Partnerships welcomed but need to be flexible and future role of management committees needs to be negotiated and communicated
- Desire for range of communities within the ASG area to be recognised and service and learning needs met
- Concern about short timescale for consultation and inability of the community to view proposals prior to committee

A more detailed breakdown of key points from this local consultation exercise is at Appendix 8.

### **6.8.3 Alternative options**

None suggested.

### **6.8.4 Further research information**

**Northfield Community Centre and Library** – Consideration was given to the reconfiguration of this building to incorporate the library within the main building and provide accommodation for use as a community learning hub. The cost of this work, (£1.4M), requires a rethink and officers are revisiting options to seek a more financially viable alternative without the requirement for significant structural work.

**Summerhill Community Learning and Development Centre and Mastrick Youth Project** – Currently Summerhill Community Centre & Mastrick Young Peoples Project are used by a wide variety of groups providing the base for CLD Adult Learning & Youth Work teams and the Learning Kitchen. These are well used with the current programmes of activity being expanded due to demand for service. Exit strategies are currently being worked up looking at use of other Council and partner facilities within the area.

**The Box and The Cell** – Community Learning & Development are exploring options for these sites.

## **6.9 Report Appendices**

These provide more in-depth information on the outcomes of the extensive consultations undertaken as follows:

Appendix 1 – Key points from local consultation for Dyce / Bucksburn ASG  
Map 1 Dyce / Bucksburn ASGs Community Learning Hub and Learning Satellite options

Appendix 2 – Key points from local consultation for Bridge of Don / Old Machar ASG  
Map 2 Bridge of Don / Old Machar ASGs Community Learning Hub and Learning Satellite options

Appendix 3 – Key points from local consultation for St Machar ASG  
Appendix 3A – Key points from local consultation on Portal CLD Centre and Tilly Youth Project

Appendix 3B – Key points from local consultation on Seaton, School Road CLD Centre  
Map 3 St Machar ASG Community Learning Hub and Learning Satellite options

Appendix 4 – Key points from local consultation for Grammar ASG  
Map 4 Grammar ASG Community Learning Hub and Learning Satellite options

Appendix 5 – Key points from local consultation for Torry / Kincorth ASGs  
Map 5 Torry / Kincorth ASGs Community Learning Hub and Learning Satellite options

Appendix 6 – Key points from local consultation for Cults, Harlaw, Hazlehead ASGs, November 2009


Appendix 6A - Key points from local consultation for Ruthrieston CLD Centre, April 2010

- Map 6 Harlaw & Hazlehead ASGs Community Learning Hub and Learning Satellite options
- Map 7 Cults ASG Community Learning Hub and Learning Satellite options
- Appendix 8 – Key points from local consultation for Northfield ASG  
Map 8 Northfield ASG Community Learning Hub and Learning Satellite options
- Appendix 9 – Key points from citywide consultations  
Map 9 Citywide Community Learning Hub and Learning Satellite options
- Appendix 10 - Key points from staff consultations
- Appendix 11 – Letters received from Community Councils during the consultation period

## 7. REPORT AUTHOR DETAILS

Jane Nicklen, Service Manager (Communities)

 [jnicklen@aberdeencity.gov.uk](mailto:jnicklen@aberdeencity.gov.uk)

 (01224) 522424

## 8. BACKGROUND PAPERS

- Report ECS/09/032, Community Learning Hubs and Review of Community Centres and Community Learning & Development Activity
- Consultation Outcomes, October – December 2009 and April 2010
- Building survey information in relation to Kincorth Community Learning & Development Centre

## Appendix 1

**18 November 2009 - Bridge of Don / Oldmachar ASG Meeting,**

**Attendance** (indicated by those who signed as being present.):  
24 and Councillor Muriel Jaffray

### Key Issues

- Meeting not happy at option for co-location of library within Scotstown Primary School for the following reasons:
  - school has no capacity to house a library; all spaces currently used
  - public use would mean access and security issues for pupils
  - this could mean a further, unwelcome, restriction on opening hours
  - this equates to spend for a short term solution
  - if library is co-located, this could compromise after school facilities currently undertaken in Scotstown Primary
  - Facilities in Primary School are of limited use for the wider public due to it being a primary school
  - Access to a relocated library would not be as good as existing library is on local bus routes and older people would be unable to get up the brae to the school
  
- Maintain existing library and build now for the future
- Revamp and upgrade existing library (include a café)
- Suggested new library required at end of Oldmachar to serve other end of BOD
- Leave community learning and development staff in Bridge of Don Academy
- Seek planning gain on the back of new development to build a new library
- Unique community of Bridge of Don deserves better integrated with a range of community facilities
- Query about leased premises and what is meant by a “semi-independent” model – increased grant to cover revenue costs



## Appendix 2

### 10 November – Bucksburn / Dyce ASGs

**Attendance** (indicated by those who signed as being present.):  
9 + Councillor Barney Crockett and Mark McDonald

#### **Key Issues:**

- Youth development work, under supply in Dyce
- Concern about lack of publicity about consultation. Only info at library, not receiving info re the school
- Concern library – confirmed staying put
- Concern about Community Centre, poor quality + size + programme
- Concern about research undertaken. Local development plans stats and figures of population were they included?
- Concern that staff will be moved around and local contact lost.
- Wanting expanded Adult Learning programme – Improved service through partners working together to provide learning opportunities to address local needs and effective use of buildings
- Concern about information on building condition of Dyce Carnegie Hall – further study commissioned due to poor condition of initial survey. Results to be presented to Councillors in January report. Existing programme of activity not under immediate threat.
- Concern about lack of contact around adult learning programmes – survey ongoing and all households being contacted.
- Beacon Centre concerns about future management of Beacon building with 3Rs. Programme, Service Level Agreement with Sport Aberdeen and Centre Management Committee. Intention to retain upper level for CL&D + access to Academy = increased opportunity + new facilities.
- Concern about Beacon Centre course affordability. Management Committee won't run the classes or set the charges. Also concern about SLA, bad experiences, wish to move forward.
- Satellites accessibility is an issue especially for those without own transport.
- Discussion on impact of Structure Plan and whether School Estates and Hub planning take account of the changes. Structure plan is aspirational, officers concerned with right buildings in right place
- Concerns about Community Learning & development budget cuts. Budget cuts – what do they really look like? 5% cut being asked for 2010-2011.
- Are options for Bucksburn/Dyce carved in stone? Will community get sight of options before report goes to Committee?

**Alternative option tabled outwith meeting to consider relocation of Dyce Library within Carden School building as part of a wider campus of community facilities located more centrally within the community.**

## Appendix 3

### 2 November – St Machar ASG

**Attendance** (indicated by those who signed as being present.): 23 = Councillor Jim Noble

#### Key Issues

##### Concerns:

- Loss of Portal; feelings of and accessibility to local people
- Any new build replacing the Portal has to be in the same geographic area
- Future of Tilly Youth Project – where will it go?
- Seaton 3Rs could be a long-term hub for Seaton but is it convenient for Tillydrone. Point made that it is a staff base and that services are also delivered from satellites across the community and that staff will still keep their local focus.
- About definitions of short/medium and long term options – Short+ 1-3 years, medium + 3-5 years and Long= 5+ years.
- About option to close Woodside Library which is a historic building of major importance. Queried alternative use reference in report explained to be archive storage in short term with option to retain as community facility in the future.
- About options for alternative library service delivery in Woodside.
- About academies lying idle when not in school use especially wood and metalwork rooms. These need to be deployed to provide routes to employment and provide jobs for young people.
- Suitability of schools as hub locations queried; many people not comfortable accessing services in schools.
- About lack of modern investment in Tillydrone.
- About need to expand Riverbank Primary School in the future and where pupils will go if required to move during extension building.
- About need for new build facilities coming on stream before existing facilities are closed – seamless transfer preferred.
- Frustration over lack of long-term, confirmed plans for Tillydrone.
- Over who staffs learning satellites.

##### Support for:

- A new build school in Tillydrone with new community facilities.
- Campus style developments
- Potential closure of Tillydrone Leased Community Centre to provide capital receipts for new build.

### 26 April 2010 – St Machar ASG

### Consultation for Portal CLD Centre and Tilly Youth Project

**Attendance:** 27

The meeting heard about future housing regeneration plans and, in the light of these, the options identified for community learning & development services in Tillydrone and the outcomes of this appraisal.

- Option A      Close Portal Community Centre and relocate services to other local sites
- Option B      Close Portal Community Centre and Tilly Youth Project and relocate services to other local sites
- Option C      Retain Portal Community Centre in short term, relocating Tilly Youth Project to the site
- Option D      Close Portal and Tilly Youth Project and relocate to Aberdon House co-locating with Housing use

The meeting then addressed questions from service users and community representatives

#### Key Issues

##### Option A

- No half way house.
- Down side looking at other buildings.
- Closing modern building
- Concern about ability to house crèche services elsewhere

##### Option B

- Concern about ability to relocate all services
- No other identified building for TYP

##### Option C

- Cost of transferring utilities
- Issue around having a homeless unit across road from Portal putting young people at risk.
- Putting young people at risk if co-housed in CLD Centre
- Some folk not wanting TYP to move into Portal.
- TYP Management Committee member felt Portal is not big enough for TYP due to the amount of young people who come in to the project.
- Not impossible to combine both projects but potential for the short term.

- How can the Crèche facilities move to the Flat. Both Portal and the Flat are full to capacity.
- Lunch time with young people would cause mayhem.
- Portal fairly new building TYP an old building. Add an extension to Portal, build houses on TYP site.
- TYP invest money into building – would they get that back – what would happen to all the equipment?
- Option to transfer music studio to Portal into crèche room?

#### **Option D**

- Community reaction to homeless hostel, 100 objections
- Not sensible next to a community centre
- Why do regeneration areas get used for this type of housing?
- It would require a substantial investment for Portal and TYP to be relocated
- Money spent on building adaptation would only provide short term service

#### **Other comments received:**

- Options not discussed – it was explained that this was the purpose of the consultation.
- Take homeless unit away and put in Portal and TYP.
- Invest back to Tillydrone instead of taking out of it.
- Make Aberdon the Hub.
- What happens if license refused for Aberdon?
- Is there another site for homeless people?,
- Tillydrone facilities are been taken away.
- Mixed tenure housing brings capital investment to enable community facilities fit for the future.
- Why waste money if Aberdon could be converted.
- Avoid piece meal approach. Plan for the future.
- Private housing in Tillydrone – who would buy a home to live here in Tillydrone?
- Query about Portal transfer to Housing. Have money in budget for buying it up to 2011/2012 but ould go back for an extension.
- Long term require HUB and brand new school.
- New school will take at least 2 years to be built. Aberdeen City Council should be thinking of it now.
- Report going in May to Education, Culture & Sport Committee on education rezoning with consultation to follow. Pressures needs to be looked at and community facilities included.
- Donside village has 250 houses being built and pressures on schooling will be addressed.
- Early Years Manager is working on the under 5's situation – crèche facilities.
- What services will be available to the older people around Aberdon who used to use Aberdon?

- New built houses at Hayton Road and the Village will hit wall as there will be no services to suit.
- Site for TYP does it have to be used for housing? Look at 3 sites (TYP, St Machar Primary and Aberdon) plan would be to include a new community facility.
- If TYP site empty for many years would this be a site for community?
- October meeting was to look at Hubs including Libraries, Woodside in particular, why is there no consultation on this? Library service will consult and prepare a report on options for the library service in the Woodside area.

Officers stressed that service continuation is the aim and undertook to circulate notes of the meeting to people who attended. Many wanted to see what the report said about Tillydrone and wanted to know what the timescales were for decisions. The report is going to the Education, Culture & Sport Committee on 27<sup>th</sup> May. It is hoped that decisions will be made so a way forward is clearer.

## Appendix 3B

**27 April 2010 –St Machar ASG**

### **Consultation on Seaton Community Learning & Development Centre, School Road**

**Attendance** : 22 Centre users, 8 agency representatives, 2 Members

#### **Key Issues**

- All participants, local people and agency representatives attending consultation were in favour of keeping School Road site open as a community learning venue.
- The value of this site was demonstrated by how the different users groups have overcome barriers anticipated and now support each other.
- Concerns were expressed regarding whether the 3r's primary school site was a suitable venue for some of the activities that currently run in School Road. These concerns were mainly to do with compatibility of rehab services in a primary school and next to Seaton Project crèche.
- Agency representatives and clients were concerned that less local people with rehab needs would access the rehab services if they were located in the Seaton Primary School site (which is less central and is a shared site with CL&D, School and Police in same building) with **resulting negative consequences for the whole community**.
- It could be difficult to locate all the current activities based in School Road and Linksfield CC into the 3r's site. In particular the drop-in and one to one nature of the rehab work.

#### **Comments from service users unable to attend the consultation:**

- You should not think of putting rehab users in a primary school
- Would new clients use the new building (at the school)?
- We like the hut as it is very busy, easy to access and in the centre of Seaton
- Parents will object, (to services in a school) though they say they wont
- The police at the other end of the building – can we trust them to leave us alone?

## Appendix 4

### Grammar ASG Local Consultation Meeting 19 November 2009 -

**Attendance** (indicated by those who signed as being present.): 8  
(4 re Ferryhill Library closure and 2 people from Bridge of Don) and Councillor John West

#### **Key Issues**

- Drugs Action keen to engage with Council to have a range of suitable venues available for users
- Concern that communication of agenda and meetings not effective
- View that Community Councils given insufficient time to respond
- Ferryhill Library should remain open for the following reasons:
  - Issue of removing 'quality of life' from local residents especially older people
  - 3<sup>rd</sup> most used in City
  - Parking issues re Ferryhill good, Central Library not as good, also difficult to get to by public transport from Ferryhill and involves walk along Union Terrace
  - Staff fantastic at Ferryhill Library
  - Limited PCs in Central Library
  - Fear that elderly won't travel distance to Central Library
- Concern over what will happen to the building if closed to public; want it to remain a resource for the community and not be turned into flats.
- Ashley and Broomhill Community Council not happy about timescale

### 4 November – Torry / Kincorth ASGs

**Attendance** (indicated by those who signed as being present.):103 ( 84 from Cove) + Councillors Yvonne Allan, Irene Cormack and Jim Kiddie (Councillor Kate Dean gave apologies)

#### Key Issues

##### Cove

##### Process

- are unhappy that proposals have not been fully costed and finalised before being presented to the community for consultation.
- feel that the Consultation process is being rushed.

##### Need for Loirston Annexe & Additional Facilities

- There are alternative suitable venues for the activities that currently take place in the Loirston Annexe.
- Evidence shows an existing lack of community services, that population is anticipated to rise and that services should be increased, not reduced.
- do not wish to commute to Torry and/or Kincorth to access services.
- Want to see the Loirston Annexe refurbished.
- Annexe is a key resource of childcare for working parents and fear it's closure would have a negative impact upon local employment.
- Annexe is viewed as a neutral building for local school children and the wider community.
- Welcome a new build community centre but are sceptical of the Council and feel that an additional resource is required rather than a replacement for the annexe.
- Wish to ensure that the benefits to the community through building developments and Planning Gain should be maximized and reflect community needs. Previous benefits have not met with the community's approval.

##### Miscellaneous Comments

- Concerns over the use of classrooms in schools out with the school day.
- Highlighted that Cove residents pay a lot to Aberdeen City Council through their Council tax.
- feel revenue savings would be negligible and that this is a means of generating a receipt for the Council at the expense of the Cove community.



## **Torry Group**

### **Key Issues**

#### **Torry Academy Hub**

- Concern about location of Hub and accessibility up a hill.
- Certain user groups, people with negative school experience may not use location / having hub in Academy shouldn't be about saving the Academy.
- If Whitespace/Torry Community Learning going into the Academy where does saving go and who gets revenue from letting?
- Is the Hub also going to be a Learning Centre? If yes need room Adult classes and crèche, CLICC has to be of a certain safety standard

#### **Torry Youth Project**

- How viable is it as a satellite given that the Sports Trust management
- **Torry Community Centre (Abbey Place)**
- Torry Community Centre is in a geographical area of Torry where there are no other facilities and new housing is being built there soon.
- Community keen to take it on but they don't want to sign an unsuitable lease.
- Torry Health Action Team use it 3 sessions per week, to deliver their service is ideally suited to this kind of one activity building.
- Other groups in the Community might also want to use the facility if they thought it had long term future.
- Leased model that is not the only option e.g. Development Trust.

#### **Torry Library**

- Restricted opening times cause access difficulties. Space constraints for other activities/ learning but very convenient because on a bus route.
- Disposal of Victoria Road School was a missed hub opportunity.

#### **Phoenix Club**

- Not included in proposals because under Social work portfolio. Building not used during the day.

#### **Balnagask Community Centre**

- No space for workers/not keen to have staff based there
- **Torry Learning House**
- Recently awarded £15000 from Fairer Scotland Fund to upgrade computer suite and work in Partnership with SHMU. / Literacy client group are comfortable in this environment.

#### **Staffing**

- Community Learning buildings are inviting to the public and encourage other organisations to use facilities / not sure how staff will move around buildings
- There might be a need for a base for other staff e.g. the Prison Project.

#### **Regeneration**

- A small amount of money spent can help the Community regenerate itself.
- New SIMD figures need to be looked at in more detail and representations made that the support available to the community needs to be developed not contracted.

## Appendix 6

### 5 November – Cults, Harlaw, Hazlehead ASGs

**Attendance** (indicated by those who signed as being present.): 9

#### Key Issues

##### Ferryhill/Ruthrieston

- Closure of Ferryhill Library and Ruthrieston Community Centre will mean that a whole community will have no provision.
- Access to Kaimhill (Library) is not easy for elderly
- A lot of elderly use Ruthrieston Community Centre
- Travel to Central Library is not realistic especially with books
- Ruthrieston Community Centre does appear to be busy
- Is a mobile library an option for Ferryhill?
- Ruthrieston Community Centre want to explore the 'lease' option as an alternative to closure
- Elderly and housebound look forward to going out locally to use library services; do not necessarily want a home service delivery
- Population is getting older and need local facilities
- Would like to question activity figures for Ruthrieston CLD – not all users need to sign in and activity figures may mirror this
- Why are arrangements being made to accommodate CLIC not before the local community

##### Kaimhill

- Given that Kaimhill 3Rs Primary School is not yet built, where will the hub be in the meantime?
- When Kaimhill Community Centre first consulted re 3Rs this was not in the plan – where will all the staff go and is there room? (9 staff operate in the area)
- What about the garage in the 3Rs school that was agreed with the Management Committee?

##### Harlaw

- Why are community facilities not available in Broomhill?

## Appendix 6A

**27 April 2010 – Harlaw, Hazlehead ASGs**

### **Consultation on Ruthrieston Community Learning & Development Centre**

**Attendance** (indicated by those who signed as being present.): 9

#### **Key Issues:**

- Query over building revenue costs (£17,000) and whether this include or exclude staffing costs. Confirmed that this does not include staffing.
- Building revenue costs are acknowledged to be uncontrollable to a large extent.
- Comment that this does not represent an excessive costs per user.
- Income generation possibilities should be explored to increase level of activity in the centre
- Level of activity less than potential level
- Inflexibilities caused by Council bookings and lettings system hinder letting of the building
- Income from lets does not come back to the centre.
- Income generation possibilities from learning activities are generally low.
- Comparison drawn with leased centres with explanation about differences that are:
  - leased centres keep income to plough back into centre, cld centres income does not come back for benefit of the centre
  - leased centres largely have no staff costs, cld professional staff work over a geographical area and staffing costs are not just attributable to the one centre
  - leased centres have independent management committees who run the building and manage programmes of activity, cld centres are run by the Council and have professional staff input to programmes.
  - leased centre programmes of activity vary from purely social and recreational activity to some with a degree of learning focus, cld centres must accommodate activities for learning in the wider community
- Ruthrieston Management Committee want a decision on the future of the centre as soon as possible and are willing to consider either leased centre of community ownership routes once a better understanding of the implications is gained.

## Appendix 7

### 18<sup>th</sup> November 2009, Local Public Consultation, Northfield Associated School Group

Attendance : 4

#### Key Issues:

- Summerhill/Mastrick/Sheddocksley are not within the Northfield ASG but public can access most convenient services regardless of the ASG.
- Concerns about the Sheddocksley community losing its identity.
- How autonomous are the satellites? – Who will manage these buildings?
- Learning Partnerships need to be flexible and future role of management committees needs to be negotiated and communicated
- Will redesign of Northfield Community Centre/Library restrict the opening hours of the community centre? Discussions have not gone that far, but need to use resources effectively.
- Concern about potential duplication of services and lack of direct transport routes between communities that might cause inaccessibility problems
- Is there a commitment to consult further with Community Groups as the proposals are developed? - Yes, as there is a need to prioritise services in line with local needs
- One stop shop opportunity at Northfield - Partnership Working is key
- Query about progress with Leased Centre Issues - Report to be produced on community learning hubs and a separate report is to be produced on leased centres.
- Concern about potential impacts of report in terms of redundancies and loss of valuable services to people such as mental health and learning disabilities services
- Query about options for further consultation prior to report going to Committee – can key options be provided to the public prior to the report being made public on 17 December?
- Schools Estate Strategy – within the 3R's project there will be community facilities for groups to access
- Request that centre users and the management committee are actively involved in future design of Northfield CLD Centre. Stage one would be to go to committee and then secure funding. Implementation stage would include consultation on the design
- Could the Police have a base within Northfield Community Learning Hub? – need to consult with local groups

**Suggested Amendment to report– Recognition that Sheddocksley is not within the Northfield ASG, but within the Hazlehead ASG because the majority of pupils go to the Hazlehead Academy.**

### CITYWIDECOMMUNITY LEARNING HUB CONSULTATION

WEDNESDAY 28<sup>TH</sup> OCTOBER 2009

#### Attendance:

23 attendees from the Kaimhill, Rosemount, Midsocket, Cornhill, Cove, Culter and the NHS Outreach  
There were no Councillors

#### Areas of Concern:

- Cornhill - Hubs and Satellites – concern re Care Commission policy, staff management within building is necessary
- How will the satellites be staffed?
- Proposal for hubs to be bases for staff – concern at loss of e.g. dedicated community learning won't be based at local community centres – lose the impact of building based work.
- Under 5's (e.g. in Cornhill) what if lone worker is off sick? Currently, someone normally available to step in. e.g. crèche – without which classes cannot go ahead.
- Difficulty of finding relief staff. Also large turnover of relief crèche staff who initially may only be available to work a few hours a week but subsequently move on to other jobs when they are able to work more hours.
- Health improvement work with schools – would the hub proposals disrupt the work of health improvement officer? e.g. in terms of accessibility, etc.
- Drugs action – in Torry area. Work in various facilities suit clients needs. a CL Hub will not fulfill confidentiality e.g. needle exchange. Range of options now limited.
- Lower Deeside – no consultation with us. Lost community worker through regeneration. No classes in Culter, couldn't use school at Culter – moved to Cults Community Centre but also added cost of hiring facilities too expensive. Close down everything just when people need more and more. Cults lost crèche and work rooms to SEN base, always pressure including saving money. New hub 7 miles away – is it going to be cost effective staff having to travel more, this will cost money
- Support the Management committee in the leased centres
- Support not just a liaison officer
- Suggest support to raise funds to employ a co-ordinator to manage admin, funding bids, insurance etc.
- These co-ordinators supported by Council to ensure correct H&S etc. procedures are undertaken and that they have covered everything.
- One Community Centre Liaison Officer not enough. CL&D can provide community capacity building but is there enough resource there?

- Closure of Ferryhill Library
- Closure of Ruthrieston CC
- Closure of Culter District Office – look at alternatives
- Will janitorial cover be increased so that schools can be used more?
- The use of libraries as learning satellites will be curtailed by short opening hours
- There are concerns regarding the opening, admin, and servicing of the satellites
- The people that use existing facilities tend not to be mobile and cannot use alternative facilities. City transport services are not compatible with the proposals
- Is there scope for dialogue with public transport providers such as First Bus to improve links to the Hubs?.
- what will be the role of management committees in future
- Are there enough CLD staff left to do what is suggested in the report
- Financial consideration – will the money from sale of buildings go into CL&D or into city funds generally
- How long will Rosemount CC exist – timescales. What will level of refurbishment be?
- Where would a new school/hub be located?
- Where would the Rosemount staff and programme go during refurbishment
- Concern re loss of links between schools and community – especially with difficult to engage pupils
- no suitable alternative re Loirston Annexe
- Closure of Loirston Annexe where do the activities go in Cove? Portacabins at Charleston already full. Loirston School Hall not suitable – like a corridor
- Henderson Complex is still needed
- Loss of heart/focus in the communitycommunity
- Loss of childcare could impact on jobs
- Transport links are poor
- Community capacity skills essential

**Support for:**

- The constitution and new lease for the ‘Leased’ centres is good
- It is good to know that the Council is looking at best value
- Hopefully there will be better working partnerships
- ‘No one size fits all’ allows local outcomes tailored to local needs
- Ethnic minority need identified via schools – therefore school/community model a positive one

**29<sup>th</sup> Octoberr 2009, Public Consultation, City Wide Event held at Aberdeen Grammar School**

**Attendance:**

17 Community Members

**Area of Concern:**

*Not ASG specific*

- **Potential Travel Created By Hubs And Building Closures**
  - Logistics of people having to move to other venues should a venue be closed
  - Increased environmental footprint if there is more travel due to lack of resources. How will this impact upon the Council's "Green" plans?
  - Additional travel will mean additional costs to service users.
  
- **Comments On The Consultation And Reporting Process**
  - Feeling that the process and proposals have been "rushed."
  - Feeling that consultation should have begun earlier in the process.
  - Feelings that decisions were being taken before information was available.
  - Not feeling included in the consultation process
  - When and how the committee decision be taken
  - No Councillors at the consultation event
  - Community want access to the background information used to draft the report.
  - More information, including financial information, required beforehand.
  
- **Concern Regarding The Detail Of Community Centre Leases And Constitutions**
  - Concerns regarding the lease for Community Centres
  - Community Centre Constitution should go hand in hand with lease
  - If management committees do not renew their leases, where does that leave the paid workers?
  
- **Concerns Regarding Support To Community Centres**
  - Will there be a Community Centre Liaison Officer
  - Will Management Committee's of leased centres be able to access the Council's legal services?
  - Concerns that if CL&D have access to the building there will be no need for a management committee
  
- **Concerns Regarding Operation Of Hubs / Satellites**
  - Storage capacity of buildings will be an issue

- How will janitorial cover be provided?
- Concerns that children might be at risk depending on what services are available for a school building (eg drug services)
- Availability of schools lets have been reduced by the Council so the community have less time in schools
- **Miscellaneous General Comments**
  - The number of new homes in the Local Development Plan
  - Loss of after school childcare provision would affect working parents and the economy.
  - Concerns that using SIMD and other similar data means that resources are diverted away from other areas that also have needs.

### ***Torry/Kincorth ASGs***

- **Lack Of Alternative Facilities For Activities Taking Place In The Loirston Annexe**
  - Lack of alternative facilities in Cove to replace activities taking place in the Loirston Annexe.
  - Previously work identified the need for additional community centre type resource in Cove.
  - Community don't want Loirston Annexe to close as there is no suitable alternatives.
  - New Cove library is not a suitable location for activities taking place in Loirston Annexe.
- **No Revenue Savings Been Made By Closing Loirston Annexe**
  - The external lets to Loirston Annexe Should cover the running costs.
- **The Need For Additional Resource In Cove**
  - Extra housing planned for Cove means greater need for community facilities.
- **Miscellaneous Kincorth/Torry Asgs Comments**
  - The Torry/Kincorth ASGs is a wide geographic area.
  - Loirston Annex is a neutral location (not one of the two primary schools) for the community

### **Support for:**

- Loirston Annexe becoming satellite



## Appendix 9

### STAFF COMMUNITY LEARNING HUB CONSULTATIONS

**MONDAY 26<sup>TH</sup> OCTOBER 2009, COWDRAY HALL**

**Attendance:** 36

**Areas of Support:**

- CL Hubs that are fit for purpose buildings
- Schools more responsive to shared facilities
- Improved support for leased centres
- Partnership approach and shared resources
- Forward thinking
- Saving money
- Holistic use of budgets
- Cross fertilisation by shared service working and different kinds of user groups
- Community benefit driven

**Key Issues raised:**

- Management of hubs and satellites; who and how?
- Clerical/admin support – need to ensure adequate cover
- Who takes responsibility where services are co-located in satellites?
- Amount of space for wider learning – not enough in some 3Rs schools
- Concentration required on service priorities for future
- Will anything happen?
- Will existing commitments made to communities be delivered?

**WEDNESDAY 28<sup>TH</sup> OCTOBER 2009, SUMMERHILL CENTRE**

**Attendance:** 30

**Areas of Support:**

- Could be good crossover amongst staff e.g. healthy minds/CLD/other services
- Future focus is clear and good to have
- Change is a good thing, looking at making better use of resources we have.
- Access to schools
- Importance of places where community can do things for themselves is acknowledged
- Generic teams is a good aspect

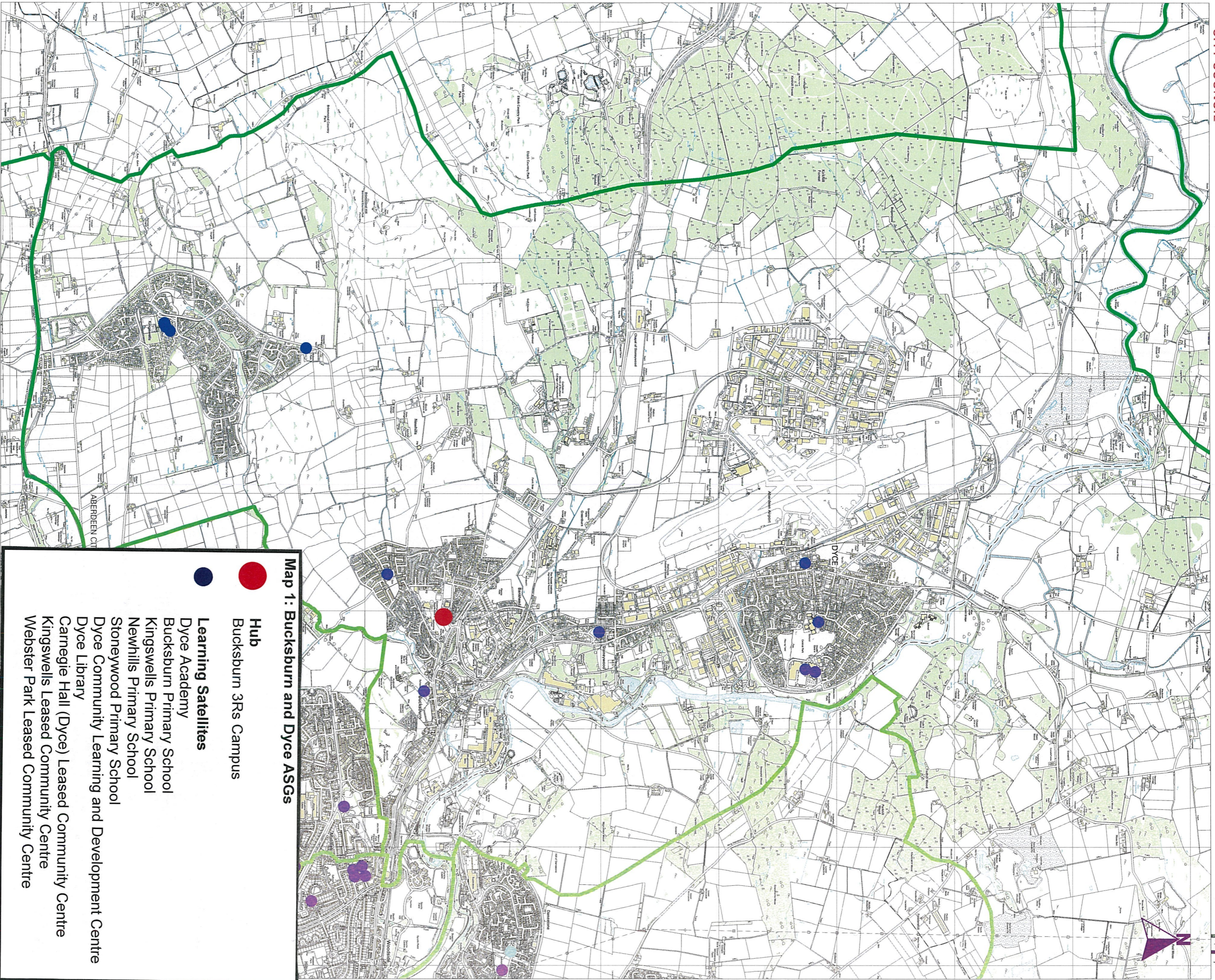
- Status quo not an option as it's not working

#### **Areas of Support ctd**

- Maintain and build on working partnerships
- Creates capacity for joint planning, sharing of data and joint working

#### **Key Issues raised:**

- Will the proposals have an impact on funding providers?
- How will it impact on clerical administrative staff and reception functions?
- Concern about communication channels for public in satellites.
- Access to satellites needs to be clear
- Building management in hubs –how will it be done?
- Need a review of CLD work and staffing structures to support this
- Transport issues for staff with no cars
- Some incomplete information in appendices
- Service Level Agreements with Sport Aberdeen need to ensure community access
- Access issues within school campus during school time
- Ensure good practice is respected
- Staff and community communication is very important
- Janitorial cover within schools needs to be more flexible so schools can be used for learning in the wider community
- Torry Learning House – some clients could/would not access services within a school
- Importance of face to face contact with public in satellites



**Map 1: Bucksburn and Dyce ASGs**

- **Hub**  
Bucksburn 3Rs Campus
- **Learning Satellites**  
Dyce Academy  
Bucksburn Primary School  
Kingswells Primary School  
Newhills Primary School  
Stoneywood Primary School  
Dyce Community Learning and Development Centre  
Dyce Library  
Carnegie Hall (Dyce) Leased Community Centre  
Kingswells Leased Community Centre  
Webster Park Leased Community Centre

**Title: Map 1: Bucksburn and Dyce ASGs**  
**Proposed Hubs and Satellites**

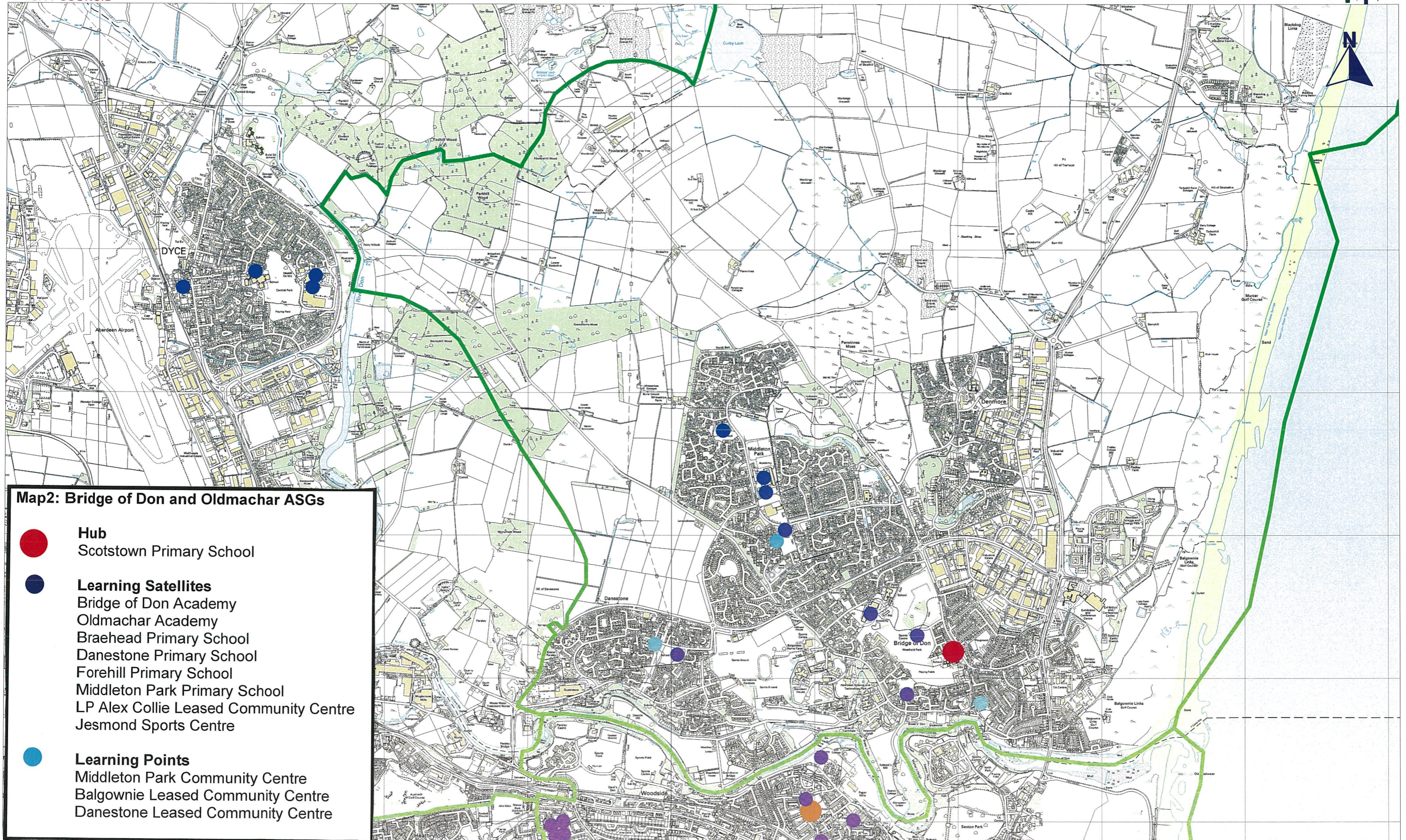


This map is reproduced from Ordnance Survey material with the permission of Ordnance Survey on behalf of the Controller of Her Majesty's Stationery Office © Crown copyright. Unauthorised reproduction infringes Crown copyright and may lead to prosecution or civil proceedings. Aberdeen City Council - 100023401 - 2007

**Scale: 1:30000**  
**Date: 14 December 2009**

**Map Ref: NJ8711**

Template prepared by GIS, Research & Information Unit, Strategic Leadership, Tel: 629222



**Map2: Bridge of Don and Oldmachar ASGs**

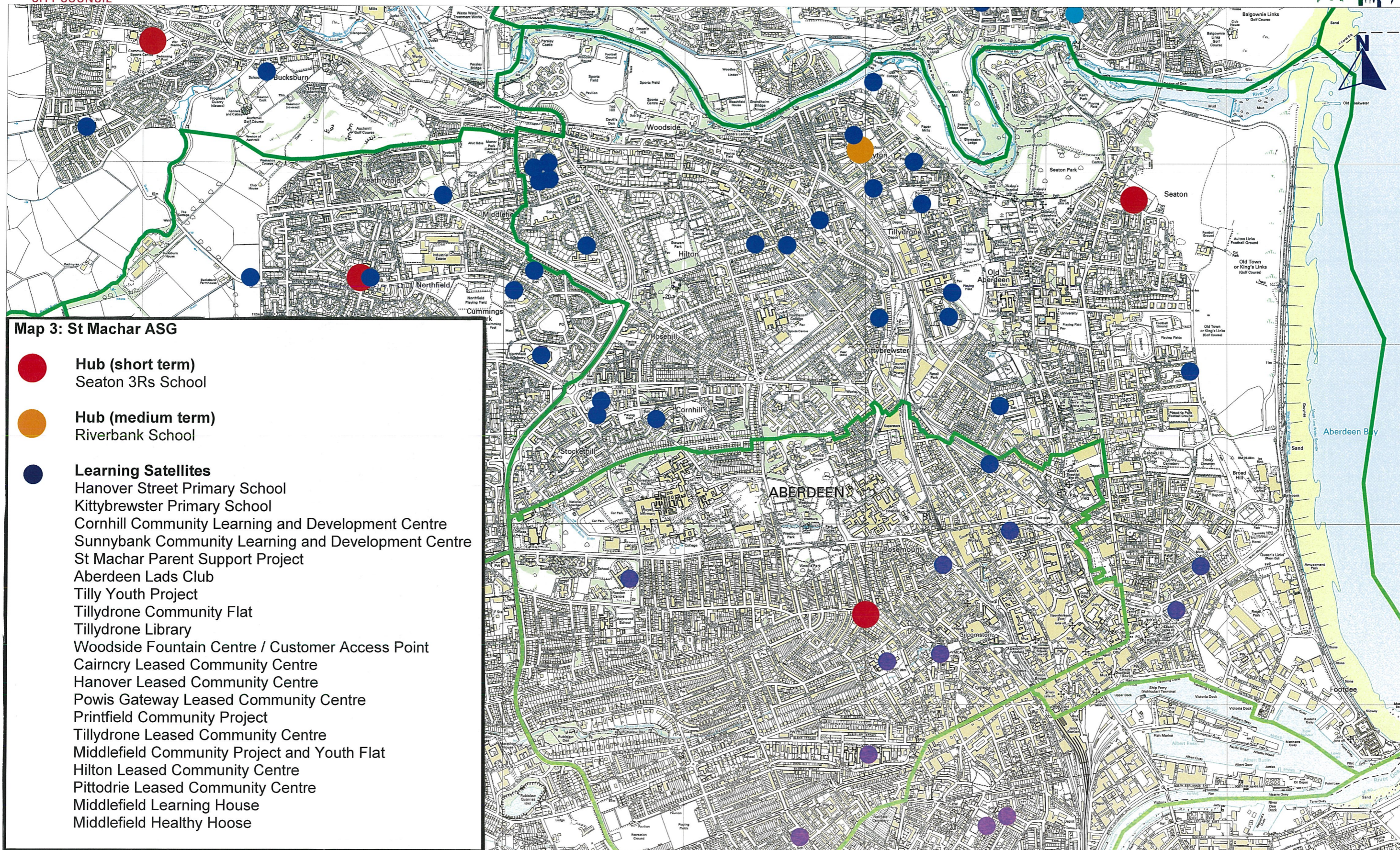
- **Hub**  
Scotstown Primary School
- **Learning Satellites**  
Bridge of Don Academy  
Oldmachar Academy  
Braehead Primary School  
Danestone Primary School  
Forehill Primary School  
Middleton Park Primary School  
LP Alex Collie Leased Community Centre  
Jesmond Sports Centre
- **Learning Points**  
Middleton Park Community Centre  
Balgownie Leased Community Centre  
Danestone Leased Community Centre

**Title: Map 2: Bridge of Don and Old Machar ASGs  
Proposed Hubs and Satellites**

**Scale: 1:25000**

**Date: 14 December 2009**

**Map Ref: NJ9211**

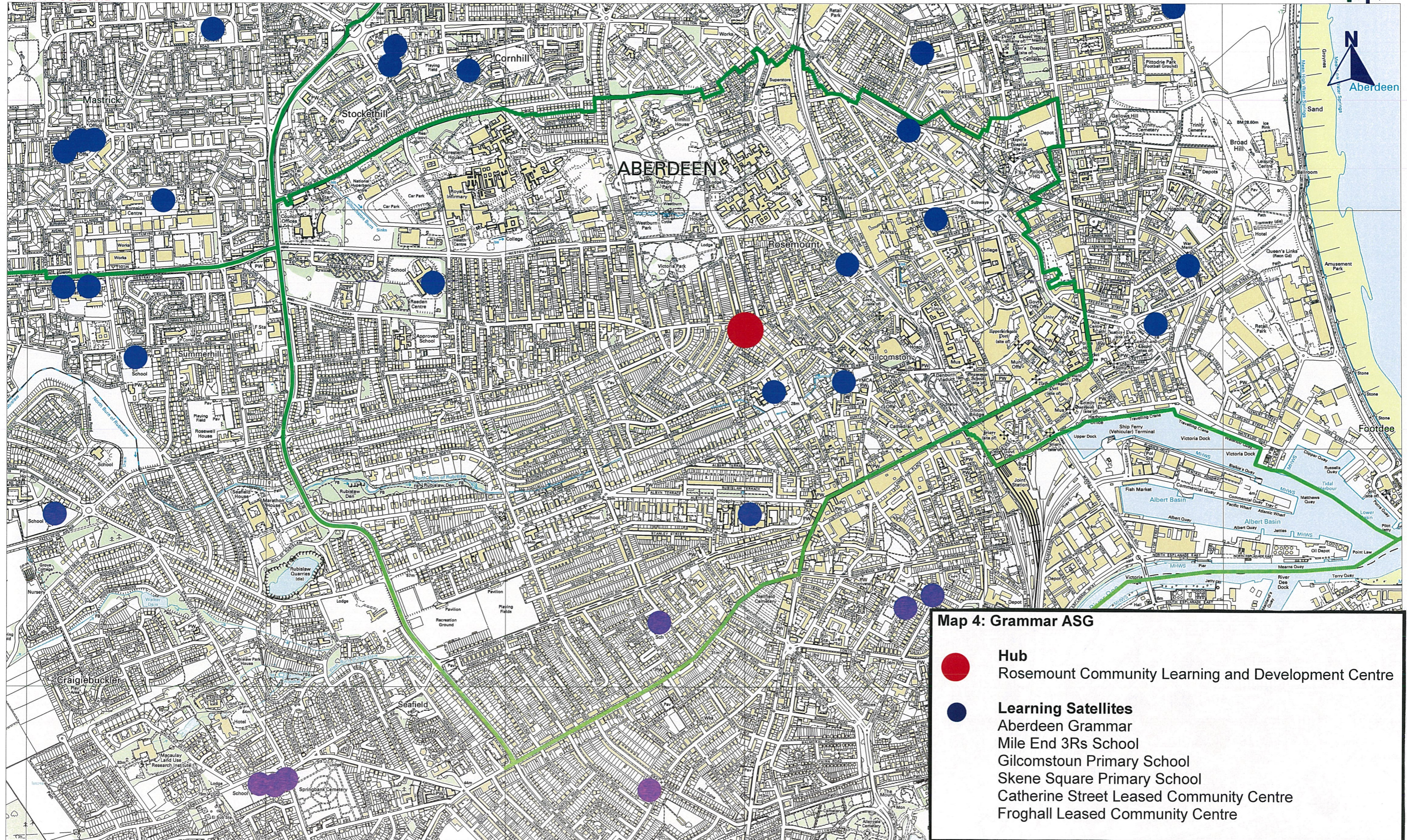


**Map 3: St Machar ASG**

- **Hub (short term)**  
Seaton 3Rs School
- **Hub (medium term)**  
Riverbank School
- **Learning Satellites**  
 Hanover Street Primary School  
 Kittybrewster Primary School  
 Cornhill Community Learning and Development Centre  
 Sunnybank Community Learning and Development Centre  
 St Machar Parent Support Project  
 Aberdeen Lads Club  
 Tilly Youth Project  
 Tillydrone Community Flat  
 Tillydrone Library  
 Woodside Fountain Centre / Customer Access Point  
 Cairncry Leased Community Centre  
 Hanover Leased Community Centre  
 Powis Gateway Leased Community Centre  
 Printfield Community Project  
 Tillydrone Leased Community Centre  
 Middlefield Community Project and Youth Flat  
 Hilton Leased Community Centre  
 Pittodrie Leased Community Centre  
 Middlefield Learning House  
 Middlefield Healthy Hoose

**Title: Map 3: St Machar ASG**  
**Proposed Hubs and Satellites**

**Scale: 1:20000**  
**Date: 14 December 2009**  
**Map Ref: NJ9207**



**Map 4: Grammar ASG**

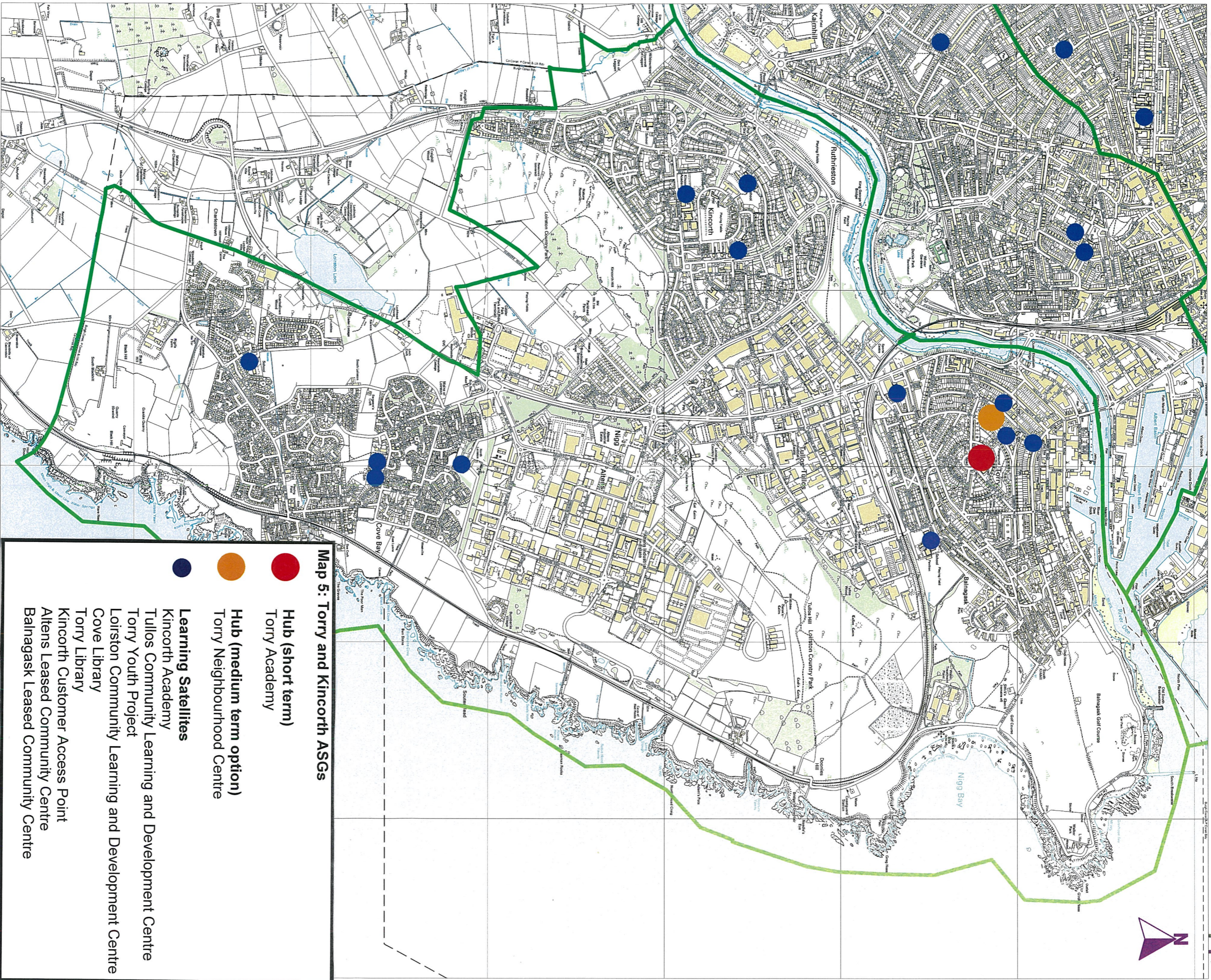
- **Hub**  
Rosemount Community Learning and Development Centre
- **Learning Satellites**  
Aberdeen Grammar  
Mile End 3Rs School  
Gilcomstoun Primary School  
Skene Square Primary School  
Catherine Street Leased Community Centre  
Froghall Leased Community Centre

**Title: Map 4: Grammar ASG  
Proposed Hubs and Satellites**

**Scale: 1:15000**

**Date: 14 December 2009**

**Map Ref: NJ9206**



**Map 5: Torry and Kincorth ASGs**

- **Hub (short term)**  
Torry Academy
- **Hub (medium term option)**  
Torry Neighbourhood Centre
- **Learning Satellites**  
Kincorth Academy  
Tullios Community Learning and Development Centre  
Torry Youth Project  
Loriston Community Learning and Development Centre  
Cove Library  
Torry Library  
Kincorth Customer Access Point  
Altens Leased Community Centre  
Balmagask Leased Community Centre

**Title: Map 5: Torry and Kincorth ASGs**

**Proposed Hubs and Satellites**



This map is reproduced from Ordnance Survey material with the permission of Ordnance Survey on behalf of the Controller of Her Majesty's Stationary Office © Crown copyright. Unauthorised reproduction infringes Crown copyright and may lead to prosecution or civil proceedings. Aberdeen City Council - 100023401 - 2007

**Scale: 1:20000**

**Date: 14 December 2009**

**Map Ref: NJ9502**

Template prepared by GIS Research & Information Unit, Strategic Leadership, Tel. 822822



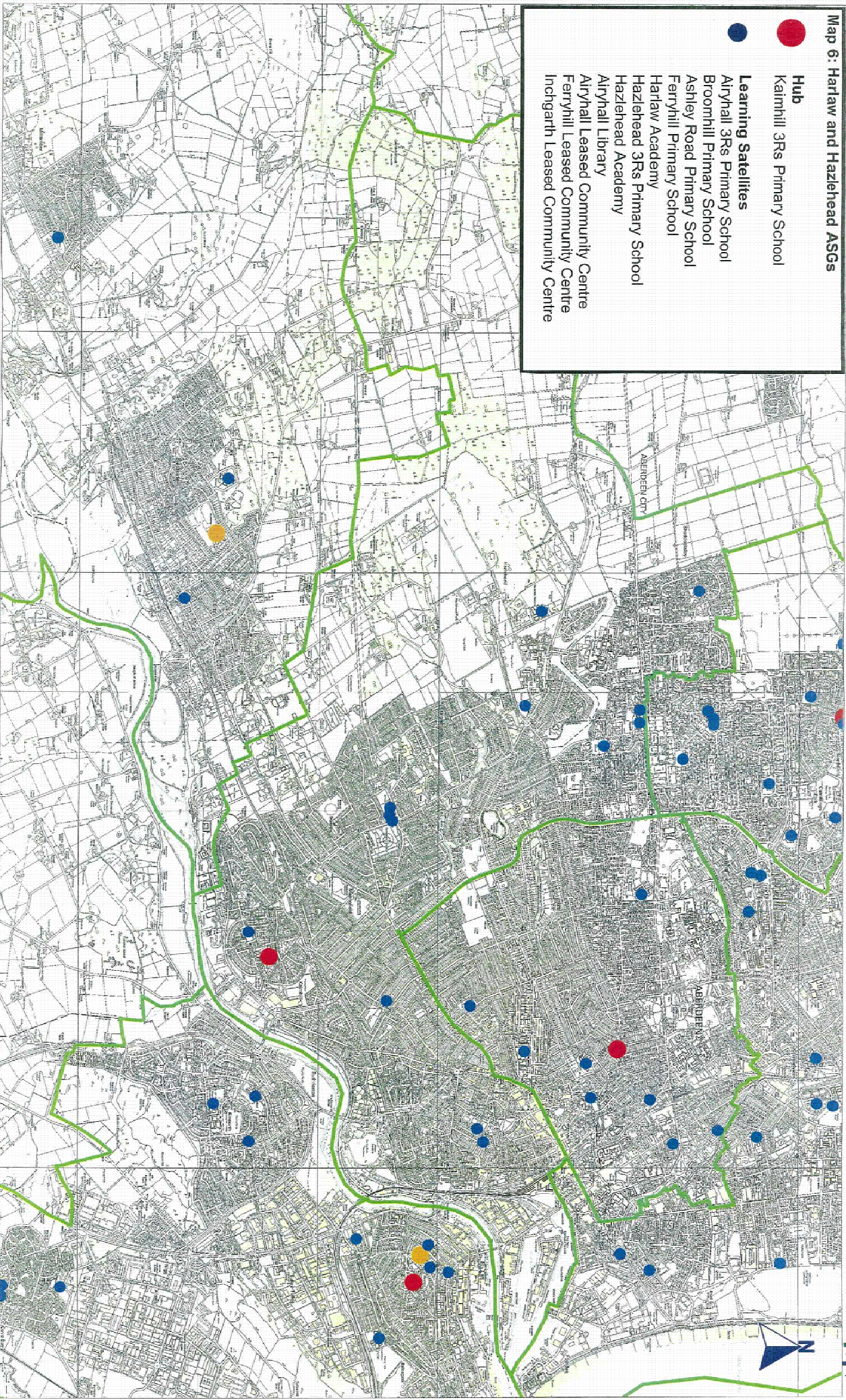
Map 6: Harlaw and Hazlehead ASGs

**Hub**

- Kalmhill 3Rs Primary School

**Learning Satellites**

- Alryhall 3Rs Primary School
- Broomhill Primary School
- Ashley Road Primary School
- Ferryhill Primary School
- Harlaw Academy
- Hazlehead 3Rs Primary School
- Hazlehead Academy
- Alryhall Library
- Alryhall Leased Community Centre
- Ferryhill Leased Community Centre
- Inchgarth Leased Community Centre



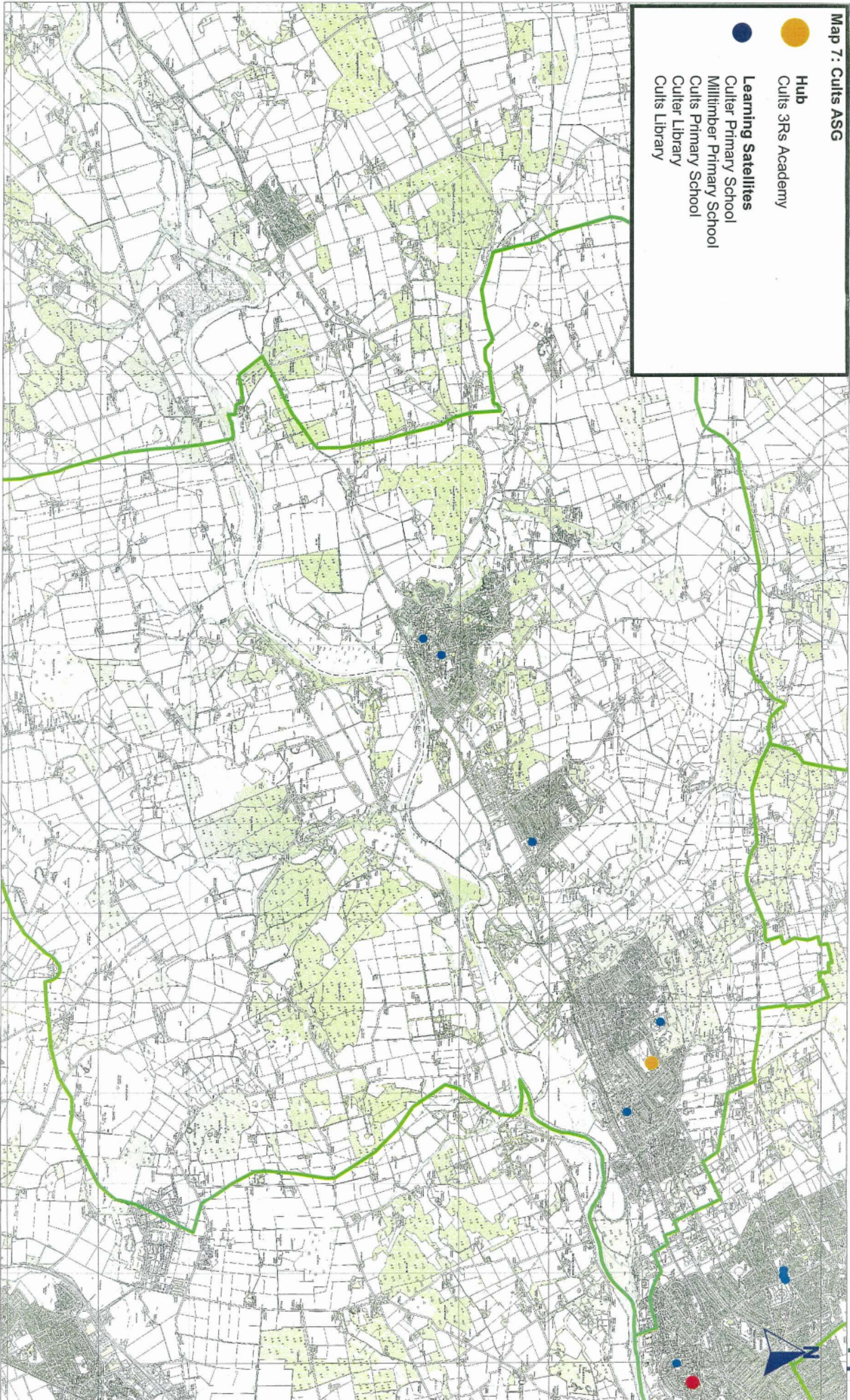
Title: **Map 6: Harlaw and Hazlehead ASGs**  
**Proposed Hubs and Satellites**





Map 7: Culls ASG

- Hub  
Culls 3Rs Academy
- Learning Satellites  
Culter Primary School  
Milltimber Primary School  
Culls Primary School  
Culter Library  
Culls Library



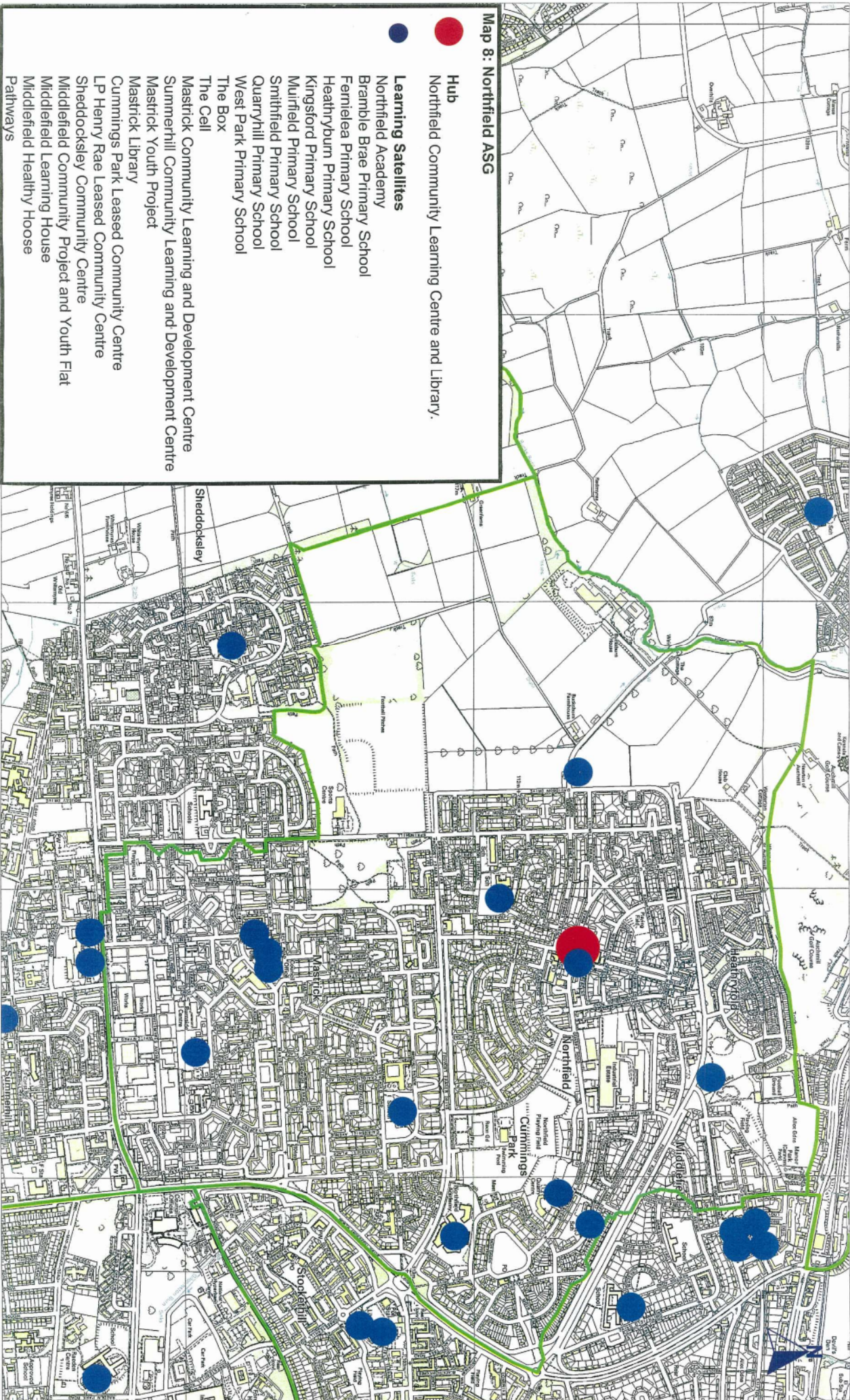
Title: Map 7: Culls ASGs  
Proposed Hubs and Satellites

Ordnance Survey  
This map is reproduced from Ordnance Survey material with the permission of Ordnance Survey on behalf of the Controller of Her Majesty's Stationary Office © Crown Copyright. Unauthorised reproduction infringes Crown copyright and may lead to prosecution or civil proceedings. Aberdeen City Council - 100023401 - 2010

Scale: 1:40000

Date: 05 May 2010

Map Ref: NJ8400



Map 8: Northfield ASG

- **Hub**  
Northfield Community Learning Centre and Library.
- **Learning Satellites**  
 Northfield Academy  
 Bramble Brae Primary School  
 Fernielea Primary School  
 Heathryburn Primary School  
 Kingsford Primary School  
 Muirfield Primary School  
 Smithfield Primary School  
 Quarryhill Primary School  
 West Park Primary School  
 The Box  
 The Cell  
 Mastrick Community Learning and Development Centre  
 Summerhill Community Learning and Development Centre  
 Mastrick Youth Project  
 Mastrick Library  
 Cummings Park Leased Community Centre  
 LP Henry Rae Leased Community Centre  
 Sheddocksley Community Centre  
 Middlefield Community Project and Youth Flat  
 Middlefield Learning House  
 Middlefield Healthy Hoouse Pathways

Title: **Map 8: Northfield ASG**

**Proposed Hubs and Satellites**

This map is reproduced from Ordnance Survey material with the permission of Ordnance Survey on behalf of the Controller of Her Majesty's Stationery Office © Crown Copyright. Unauthorised reproduction infringes Crown copyright and may lead to prosecution or civil proceedings. Aberdeen City Council - 100023401 - 2010

Scale: 1:12500

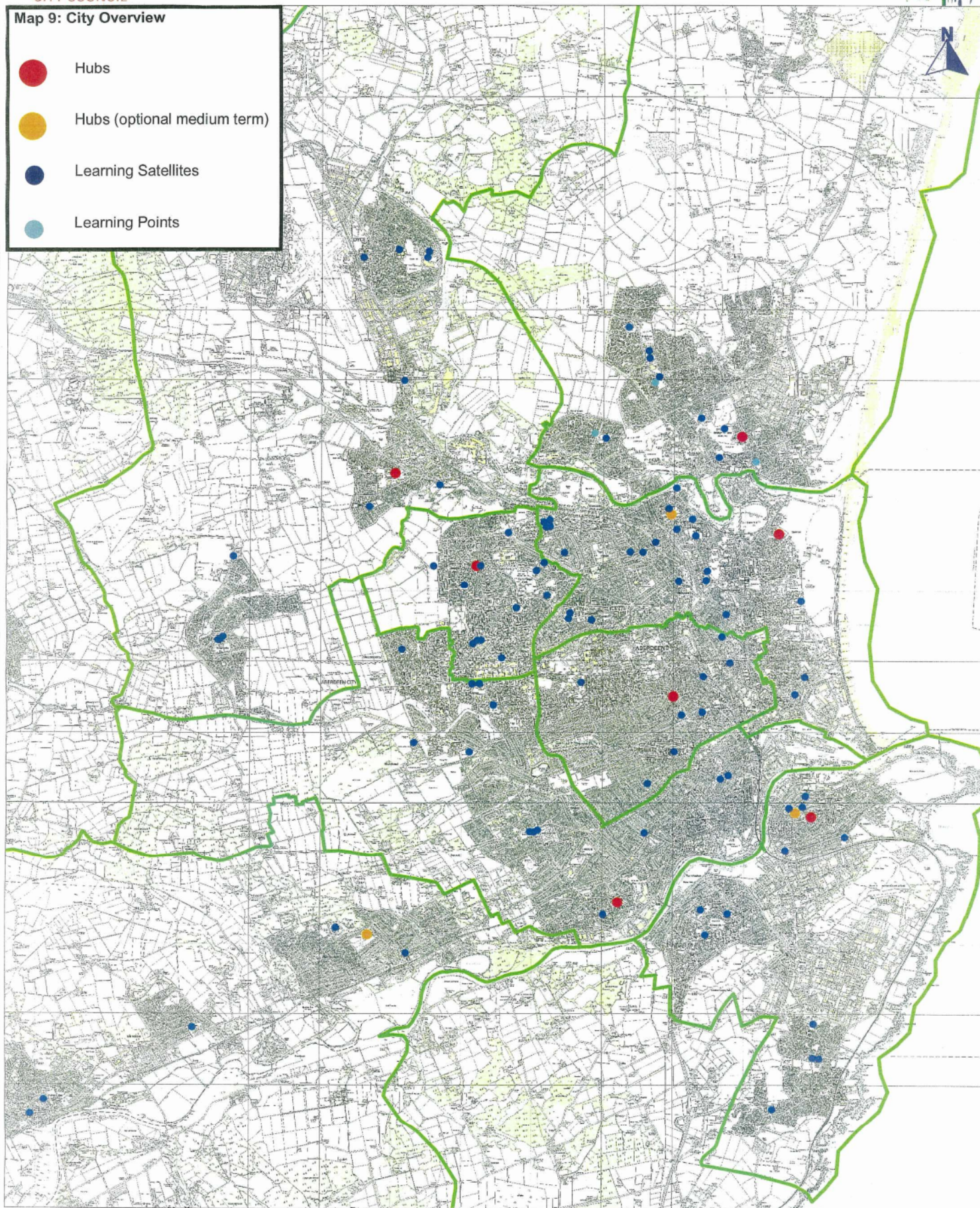
Date: 05 May 2010

Map Ref: NU8907



**Map 9: City Overview**

- Hubs
- Hubs (optional medium term)
- Learning Satellites
- Learning Points



**Title: Map 9: City Overview**

**Proposed Hubs and Satellites**

**Scale: 1:50000**

**Date: 05 May 2010**

**Map Ref: NJ9007**



This map is reproduced from Ordnance Survey material with the permission of Ordnance Survey on behalf of the Controller of Her Majesty's Stationery Office © Crown copyright. Unauthorised reproduction infringes Crown copyright and may lead to prosecution or civil proceedings. Aberdeen City Council - 100023401 - 2010

Template supplied by: GIS, Aberdeen City Council, Aberdeen, Tel: 01224 222000